

## Other Oat varieties

released by the North Dakota  
Agricultural Experiment Station:

**Souris** – (2006). White- hulled high yielding variety with new source of disease resistant to crown rust, and excellent test weight.

**Maida** – (2005). High yielding, disease resistant with high test weight and milling yields.

**Beach** – (2004). High yield with above average test weight, excellent straw strength, good lodging resistance and crown rust resistance.

**Stark** – (2004). High yielding and high test weight hullless oat with good lodging and disease resistance.

## For information on the availability of Foundation seed contact:

### NDSU Research/Extension Centers

Agronomy Seed Farm, Casselton.....347-4743  
Carrington Research Extension Center.....652-2951  
Hettinger Research Extension Center .....567-4323  
Langdon Research Extension Center.....256-2582  
North Central Research Ext. Center .....857-7679  
Williston Research Extension Center .....774-4315

Or

### NDSU Foundation Seedstocks Project

P.O. Box 6050, Fargo, ND 58108-6050  
(701) 231-8140  
[www.ag.ndsu.nodak.edu/aginfo/seedstock/fss/](http://www.ag.ndsu.nodak.edu/aginfo/seedstock/fss/)

## Plant Quality Certified Seed

Certified seed is field inspected and lab analyzed to help ensure variety identity, germination, and purity. Contact you local seed producer or dealer for quality certified seed.

Seed producers or dealers can be found in the North Dakota Field Inspected Seeds Directory. The directory is available from the North Dakota State Seed Department (NDSSD), North Dakota Crop Improvement & Seed Association, your local county agent, or under the field seeds program of the NDSSD website.

[www.ndseed.com](http://www.ndseed.com)

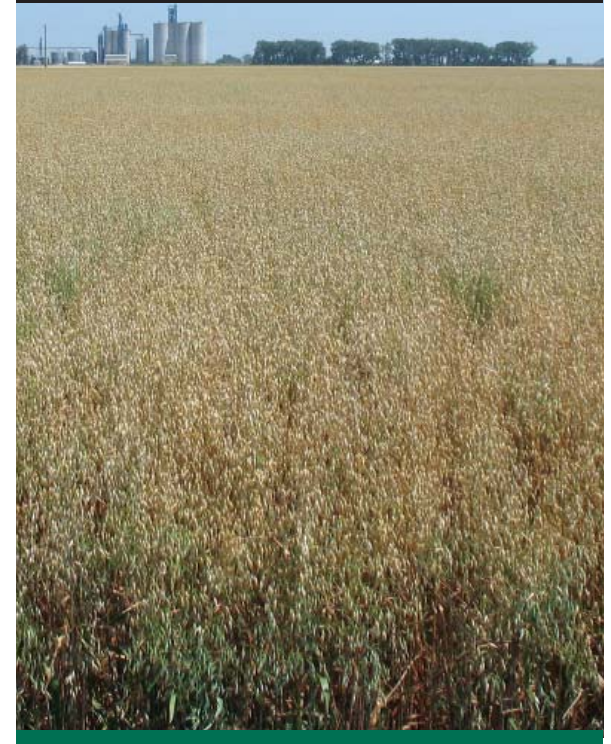


Varieties protected under PVP with Title V option can only be sold as a certified class of seed. **It is the responsibility of the buyer and/or seller to confirm the PVP status of a specific crop variety prior to buying or selling the variety.** PVP status information can be obtained from the ND State Seed Department.

# NDSU<sup>®</sup>

## AGRICULTURE

# Rockford Oat



[www.ndcropimprovement.org](http://www.ndcropimprovement.org)

# Rockford Oat

**Rockford** oat was developed by the NDSU oat breeding project and released by the Agricultural Experiment Station in January of 2008.

Rockford is a high yielding variety, and higher test weight better than Morton, HiFi, and Souris across 47 locations in ND. It posses very good lodging resistant. It has a medium kernel weight, medium grain protein, medium groat percentage with high groat oil concentration, and a medium groat beta-glucan concentration. Rockford has consistently produced high yields and test weights during five years of testing at several sites in North Dakota.

Compared to HiFi and Morton, Rockford typically has a greater groat percentage. It has same maturity as Souris, Morton and HiFi. The straw strength of Rockford is similar to Morton and stronger than HiFi and Souris. The groat beta-glucan content of Rockford is greater than Souris, and Morton.

Rockford posses a crown rust and Stem rust resistance similar to HiFi and Souris. It is moderately susceptible to stem rust race NA67. Rockford is tolerant to barley yellow dwarf virus.

Rockford performs relatively well under a variety of growing conditions. It has good yields in Eastern and Western North Dakota. It should provide a superior alternative to Morton due to its superior grain yield, test weight, lodging resistance and crown rust resistance.

To help ensure genetic purity, 'Rockford' oat will be protected under PVPA. A research fee of \$0.20 per bushel will apply to all sales of Registered and Quality Assured Souris Oat Seed. Rockford oat will be marketed through the North Dakota Crop Improvement and Seed Association.



## Rockford General Characteristics

- Exceptional yield potential
- Excellent test weight
- Very good lodging resistance
- Good resistance to crown rust
- Good protection against stem rust

Yield and test weight of Rockford oat in eastern North Dakota NDSU variety trials, 2004-2008.

Variety	Fargo		Carrington		Edgely		Langdon	
	Test Weight	Yield (bu/a)	Test Weight	Yield (bu/a)	Test Weight	Yield (bu/a)	Test Weight	Yield (bu/a)
<b>Rockford</b>	<b>41.6</b>	<b>183</b>	<b>37.5</b>	<b>129</b>	<b>41.7</b>	<b>141</b>	<b>39.8</b>	<b>159</b>
Beach	41.6	163	37.4	127	41.7	135	37.5	138
Hi-Fi	40.0	182	35.7	125	39.8	133	38.6	160
Jerry	41.4	159	37.5	117	41.2	118	37.1	121
Killdeer	38.6	188	35.2	130	38.9	131	35.1	138
Maida	40.1	170	36.7	130	39.9	124	36.4	126
Morton	41.0	159	37.0	124	40.9	127	39.4	145
Souris	40.5	187	36.5	125	39.8	135	38.1	155

Yield and test weight of Rockford oat in western North Dakota NDSU variety trials, 2004-2008.

Variety	Williston		Dickinson		Hettinger		Minot	
	Test Weight	Yield (bu/a)	Test Weight	Yield (bu/a)	Test Weight	Yield (bu/a)	Test Weight	Yield (bu/a)
<b>Rockford</b>	<b>37.6</b>	<b>103</b>	<b>35.8</b>	<b>83</b>	<b>35.5</b>	<b>96</b>	<b>38.9</b>	<b>169</b>
Beach	38.2	98	36.5	60	36.7	85	37.5	153
Hi-Fi	35.7	98	33.6	79	34.4	88	36.6	154
Jerry	37.0	86	35.6	92	36.9	83	36.1	130
Killdeer	35.1	100	34.5	80	34.8	+2	35.3	149
Maida	36.4	92	34.5	90	35.3	83	35.6	145
Morton	36.3	92	34.4	92	34.1	81	36.2	155
Souris	36.8	100	34.6	90	35.7	91	36.1	150