

Cattle, Hog, and Sheep Seasonal Price Charts

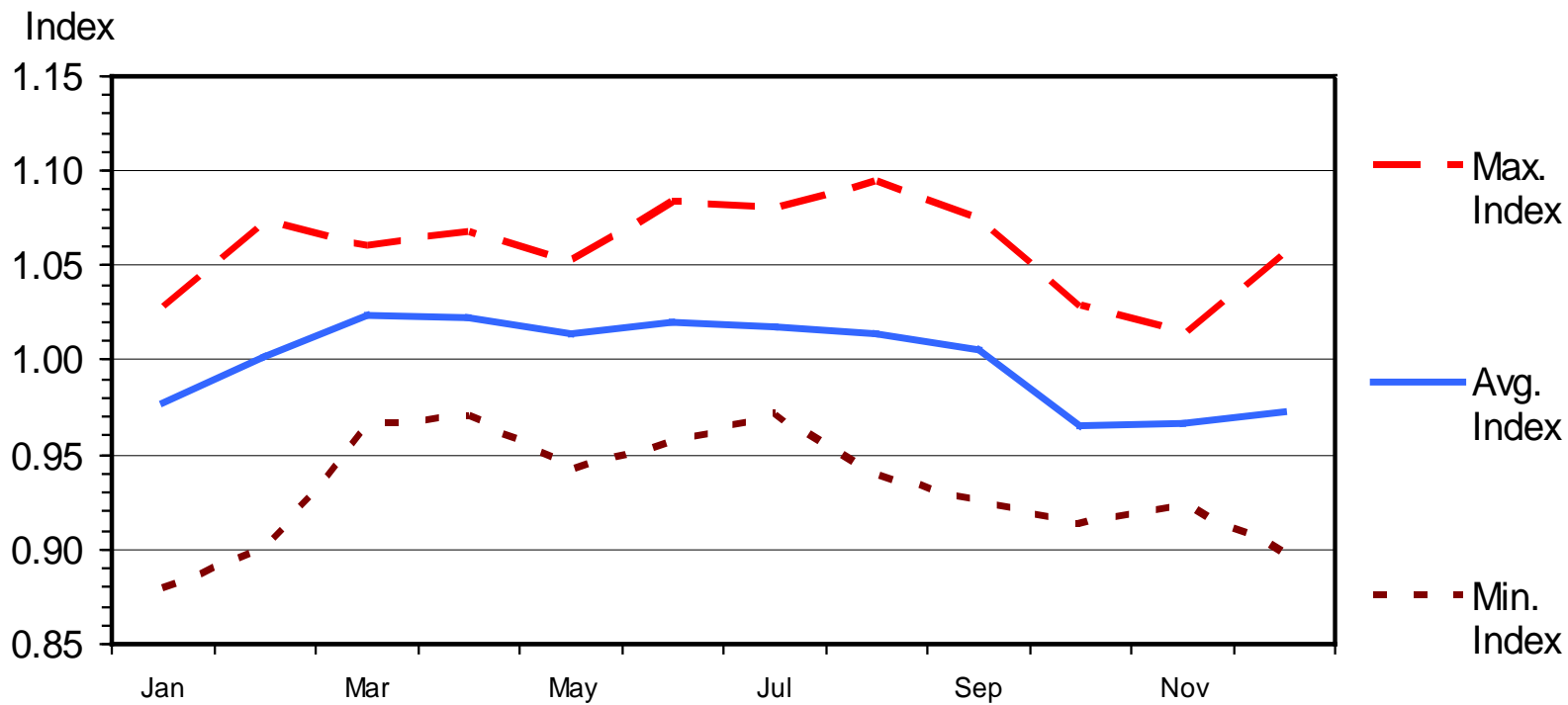


Tim Petry
Livestock Marketing Economist

NDSU
Extension Service
North Dakota State University

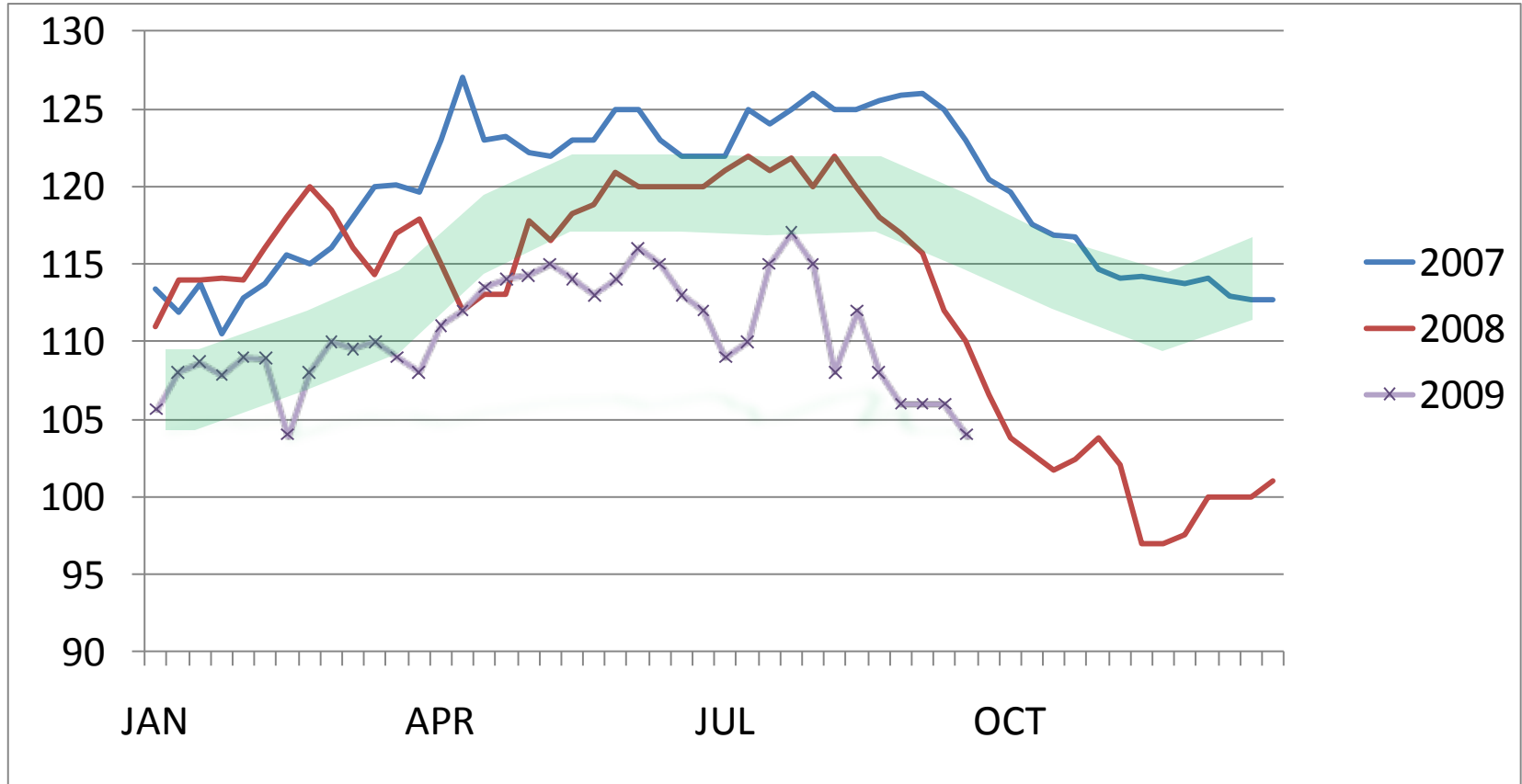
SEASONAL PRICE INDEX -- STEER CALVES

500-600 Pounds, 1999-2008



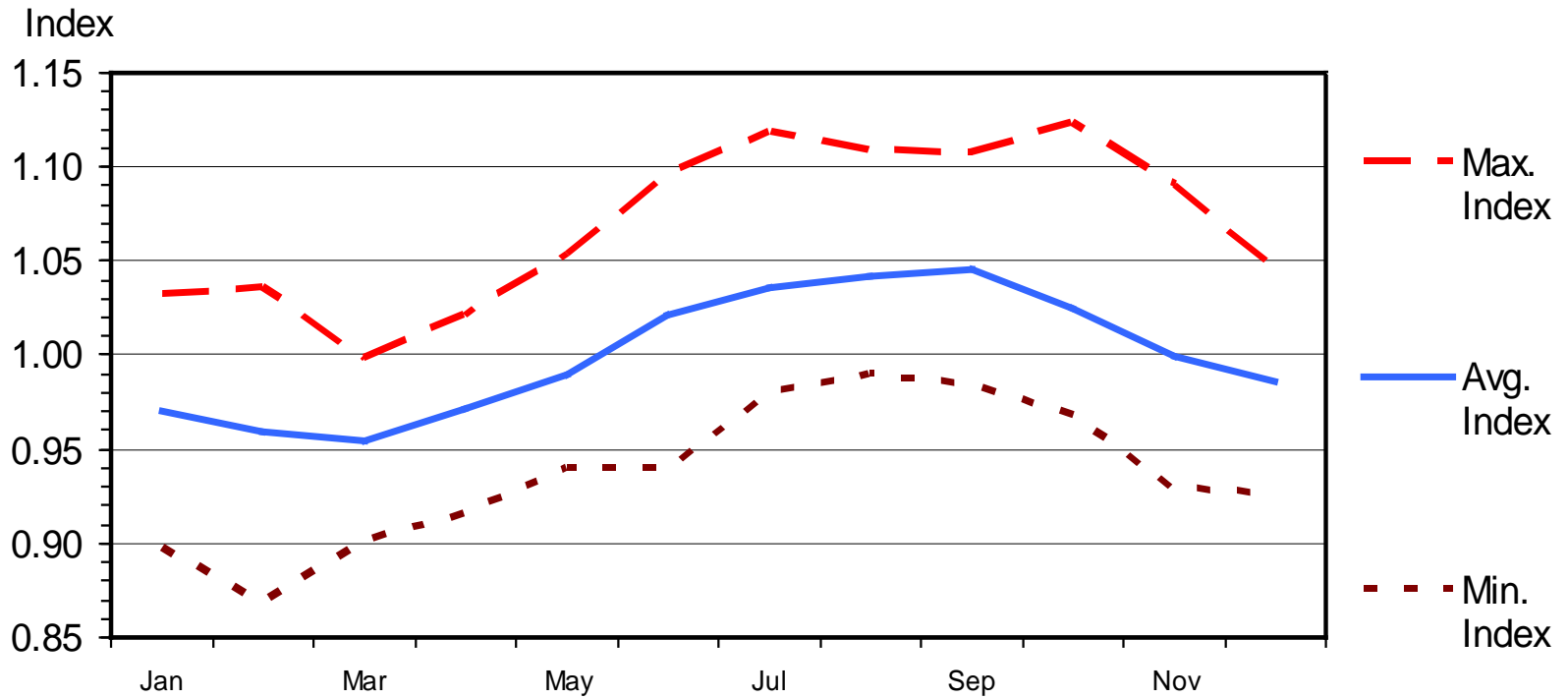
MED. FRAME #1 STEER CALF PRICES

550-600 Pounds, Dakotas, Weekly



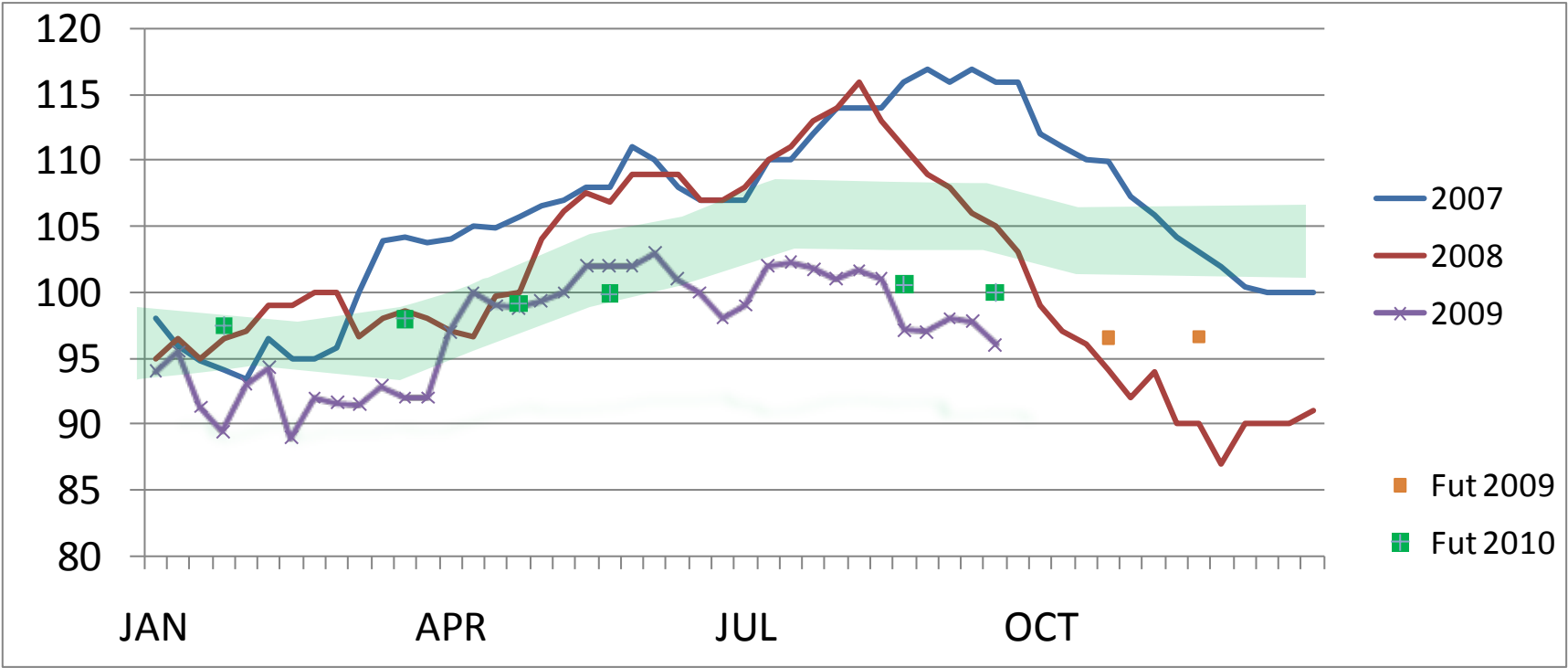
SEASONAL PRICE INDEX -- FEEDER STEERS

700-800 Pounds, 1999-2008



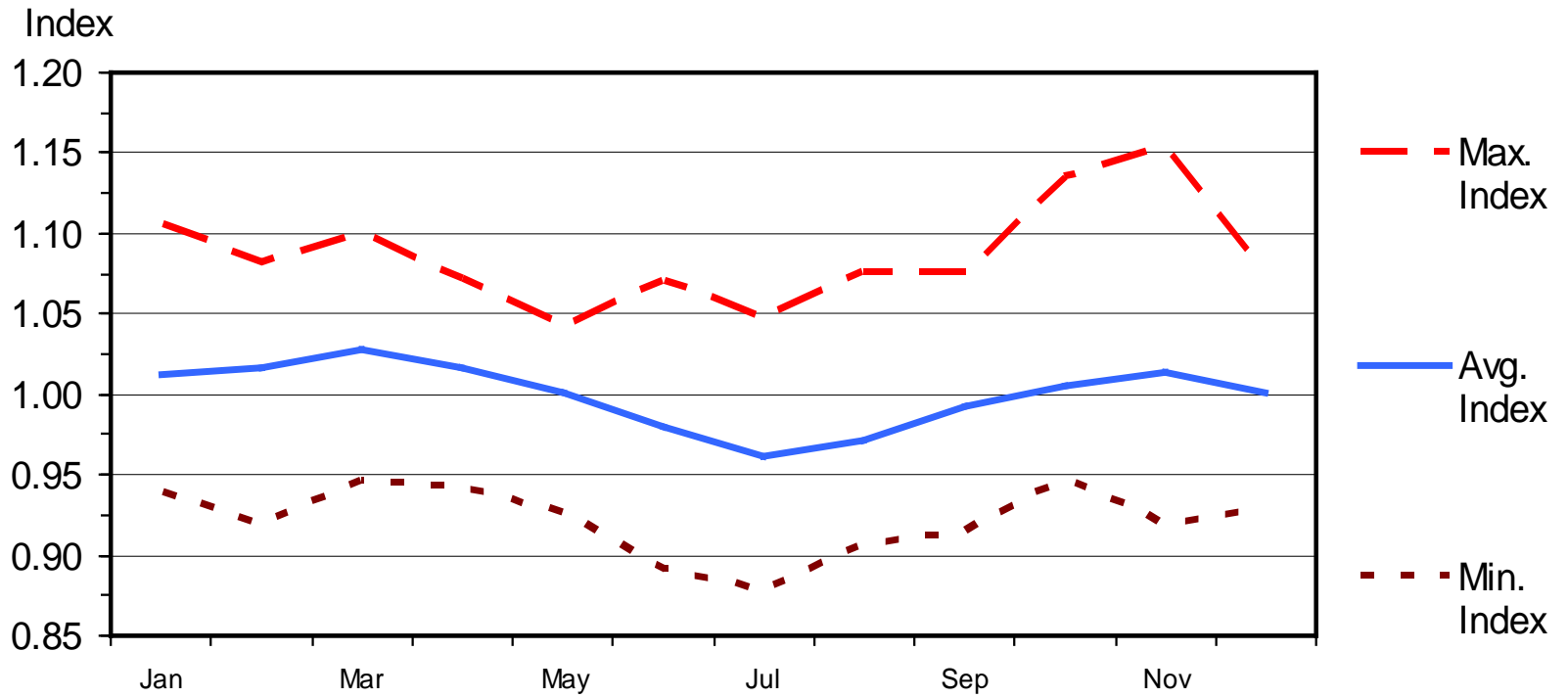
MED. & LRG. #1 FEEDER STEER PRICES

700-800 Pounds, Dakotas, Weekly



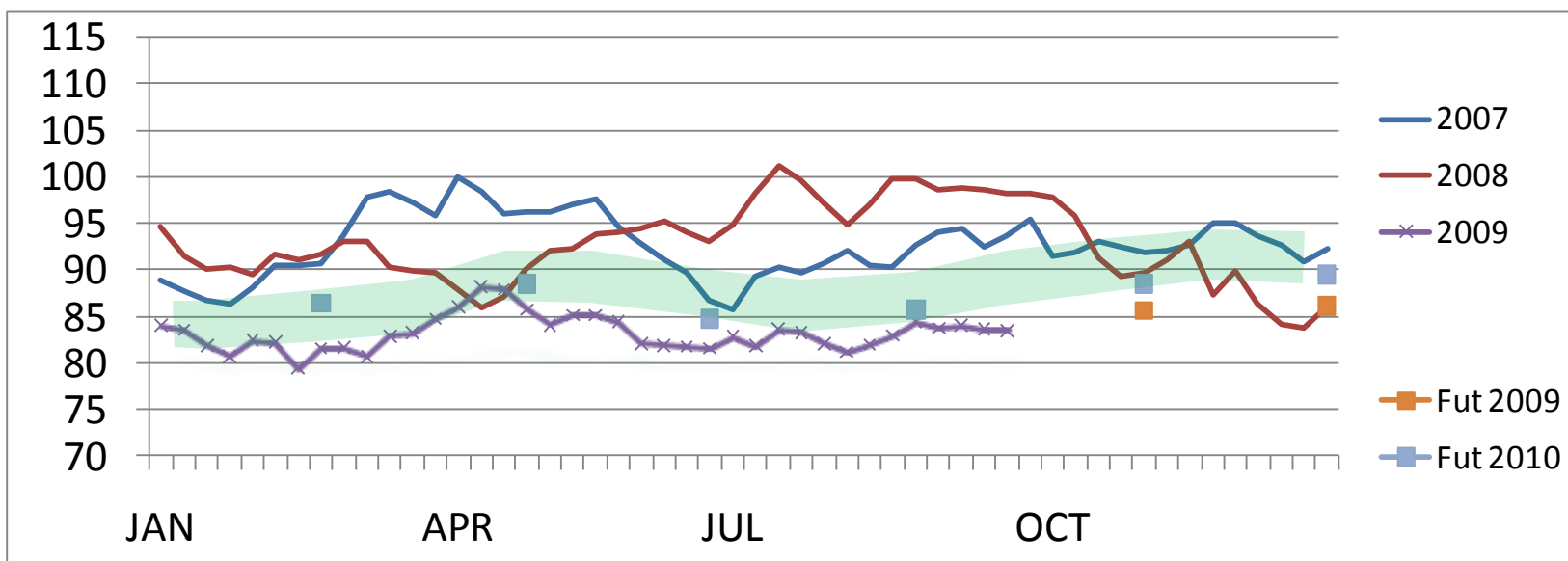
SEASONAL PRICE INDEX -- FED STEERS

1999-2008



CHOICE SLAUGHTER STEER PRICES

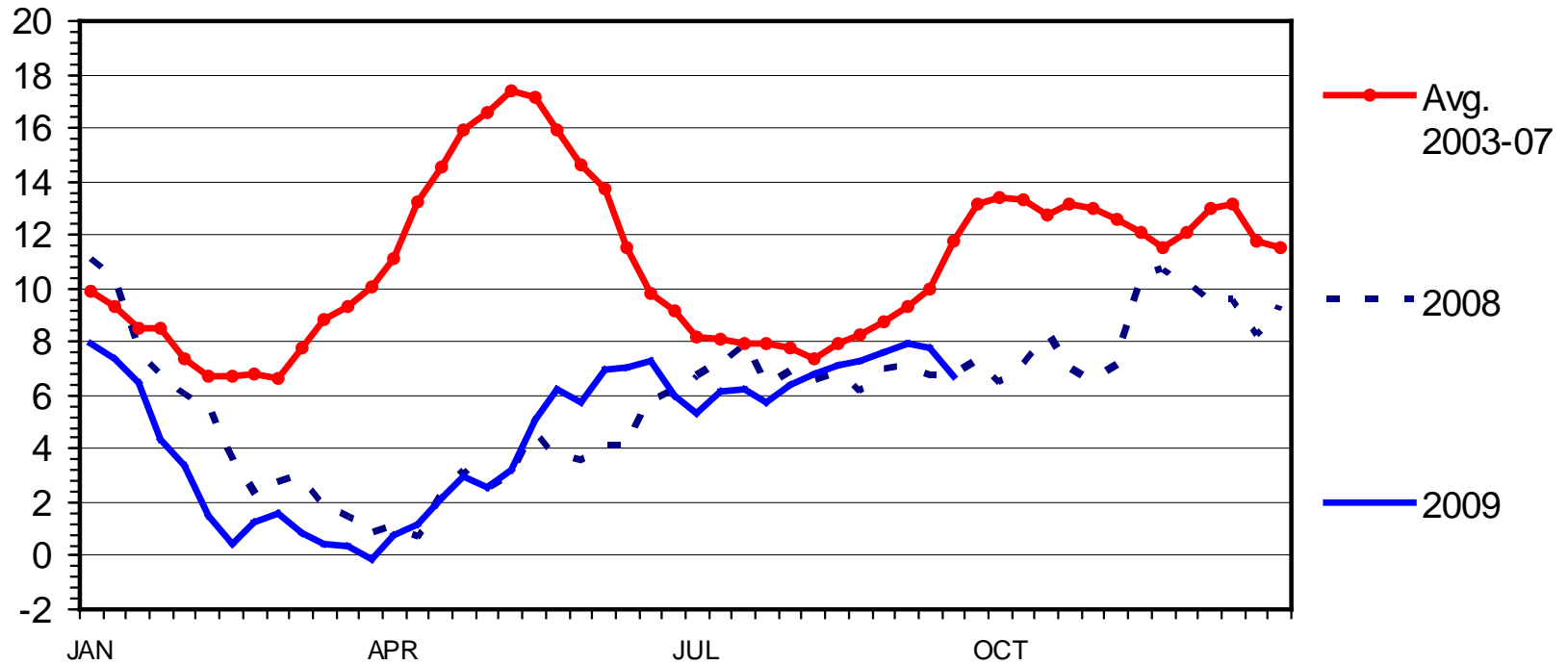
5 Market Weighted Average, Weekly



CHOICE MINUS SELECT BEEF PRICES

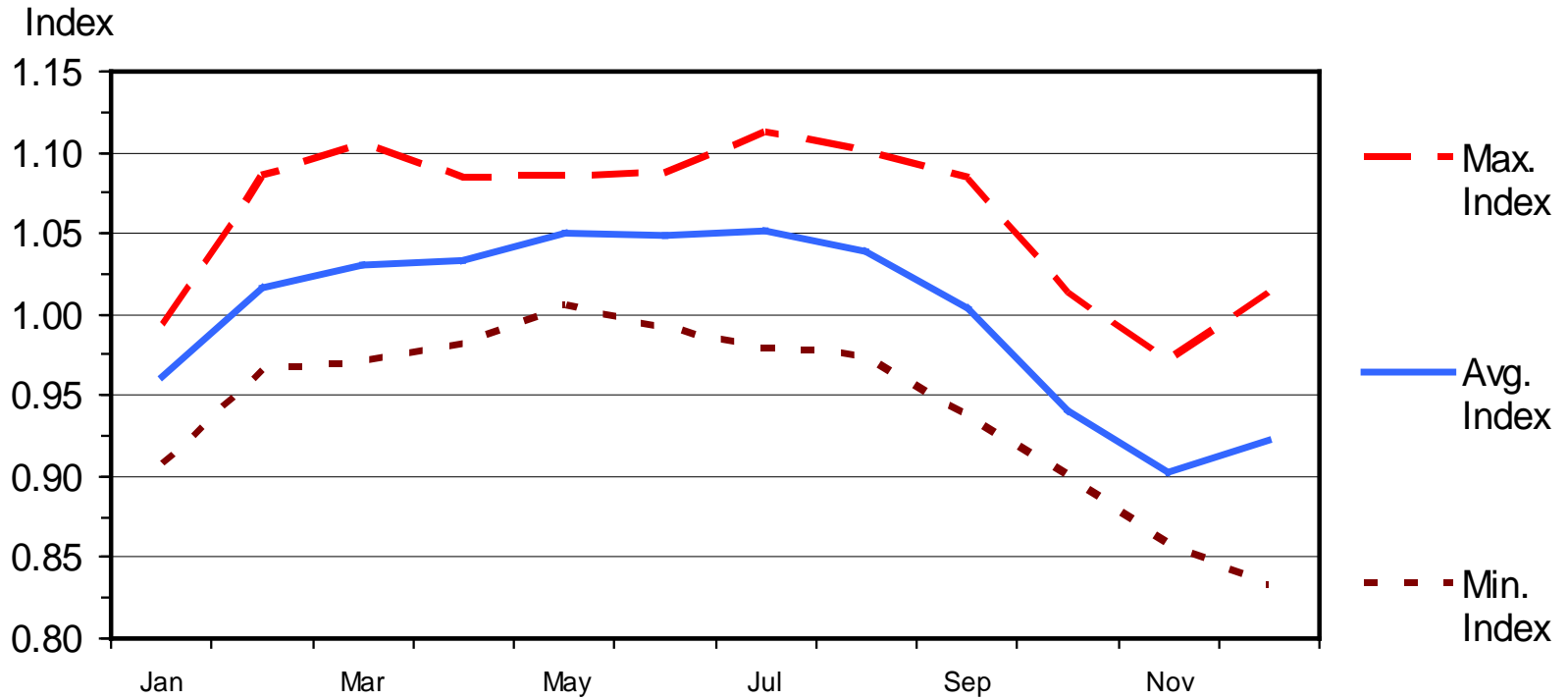
Carcass Cutout Value 600-900 Lbs., Weekly

\$ Per Cwt.



SEASONAL PRICE INDEX -- UTILITY COWS

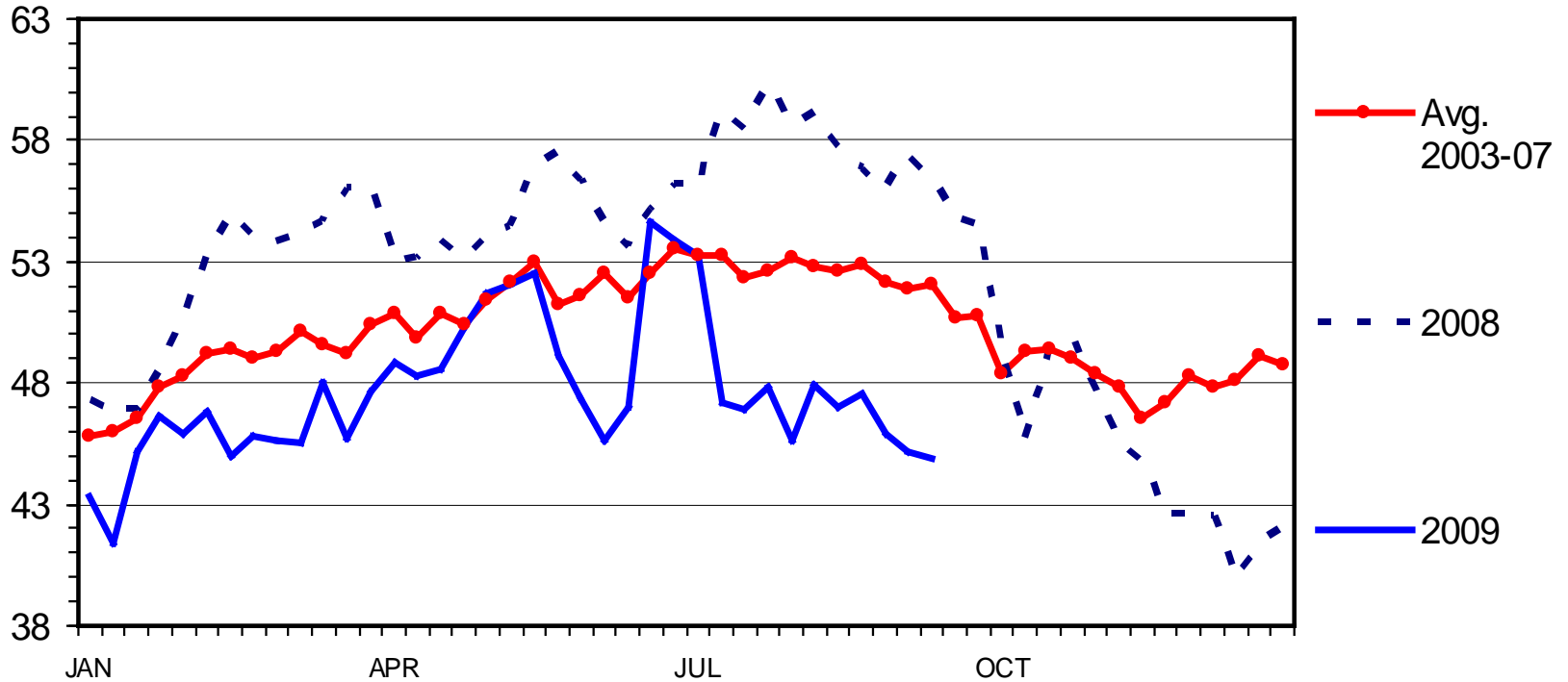
1999-2008



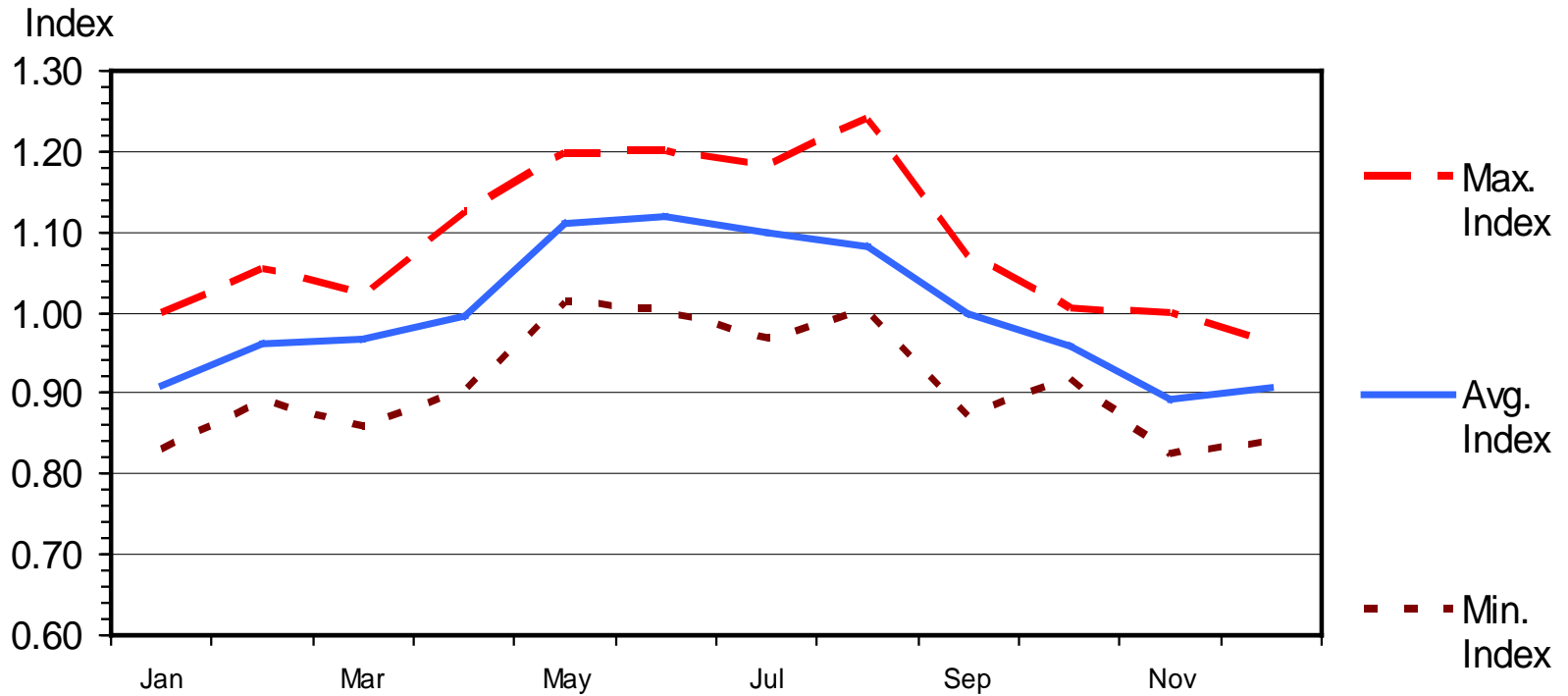
SLAUGHTER COW PRICES

85-90% Lean, Weekly

\$ Per Cwt.



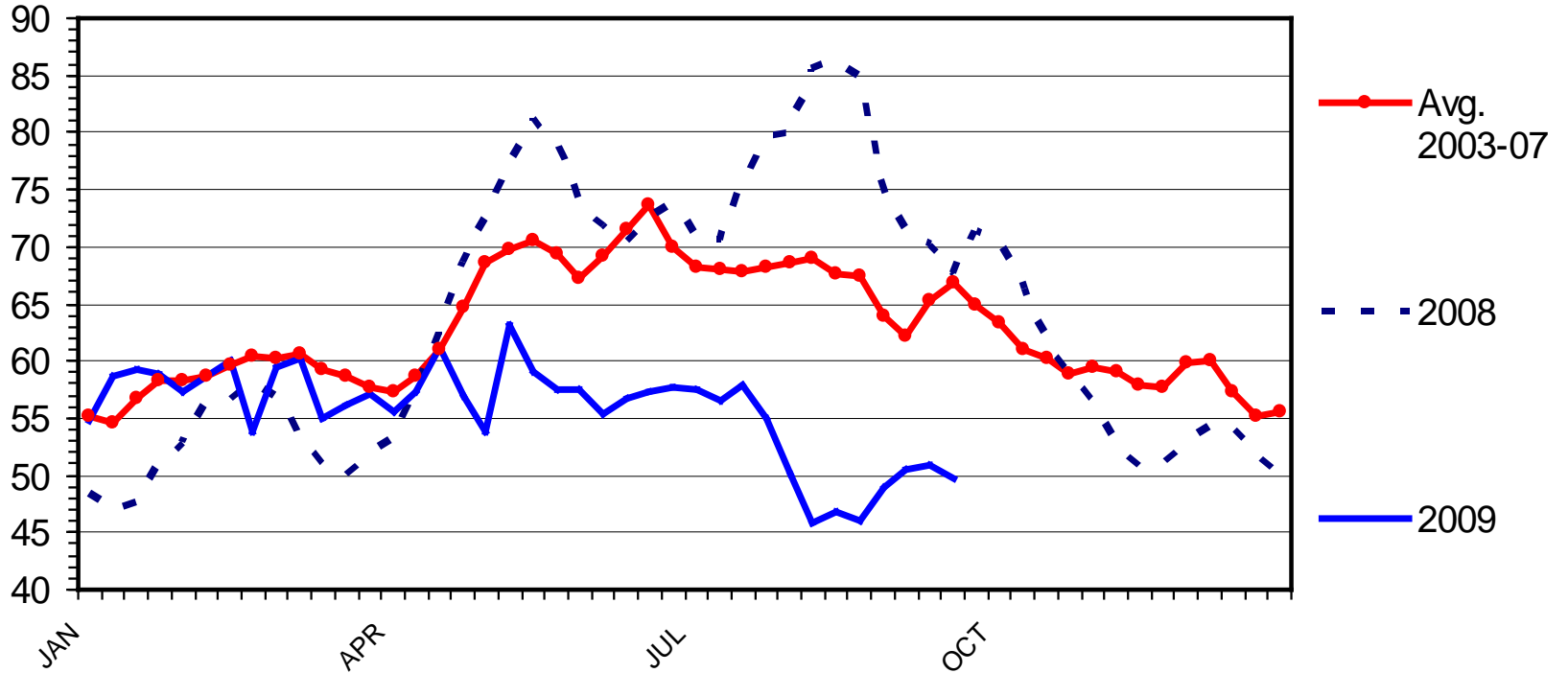
SEASONAL PRICE INDEX -- SLAUGHTER HOGS 1999-2008



BARROW AND GILT PRICES

Iowa - So. Minnesota, Carcass Base Price, Weekly

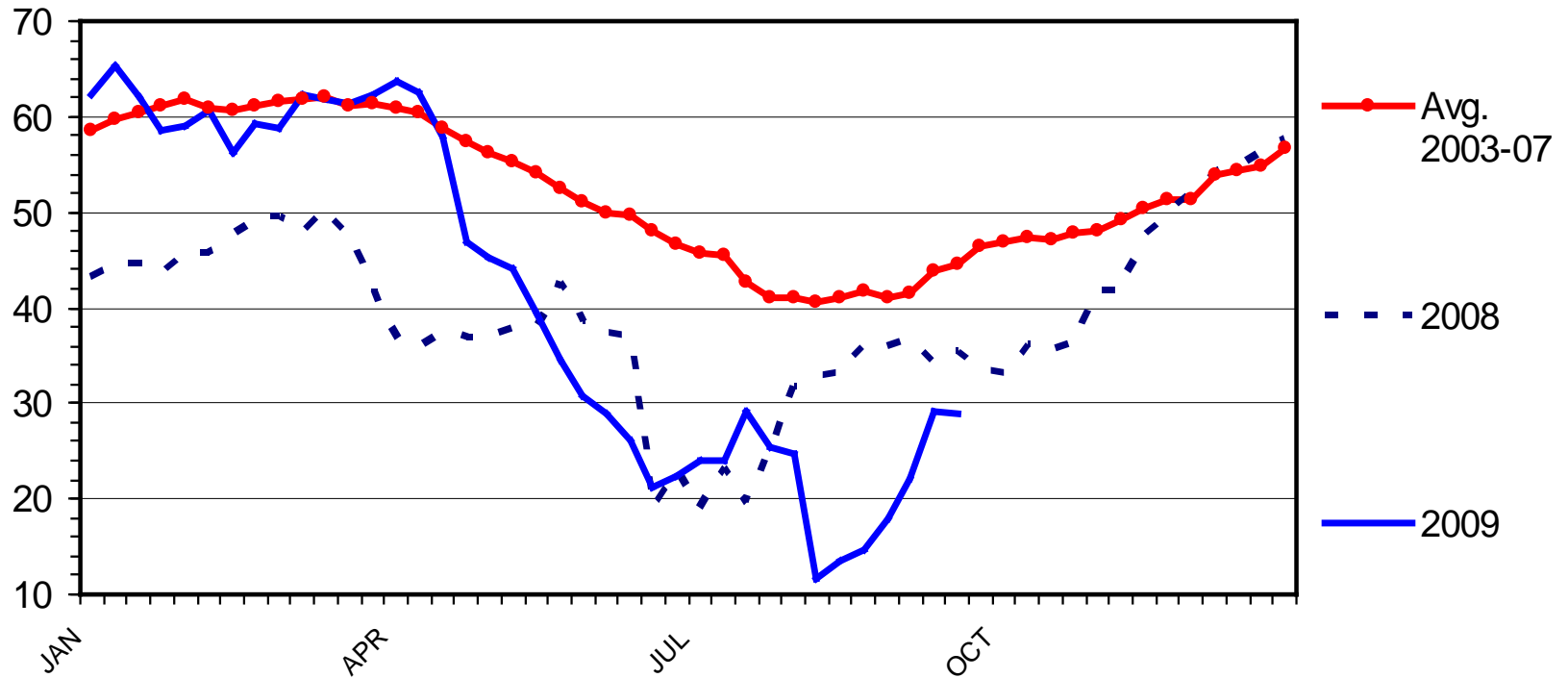
\$ Per Cwt.



FEEDER PIG PRICES

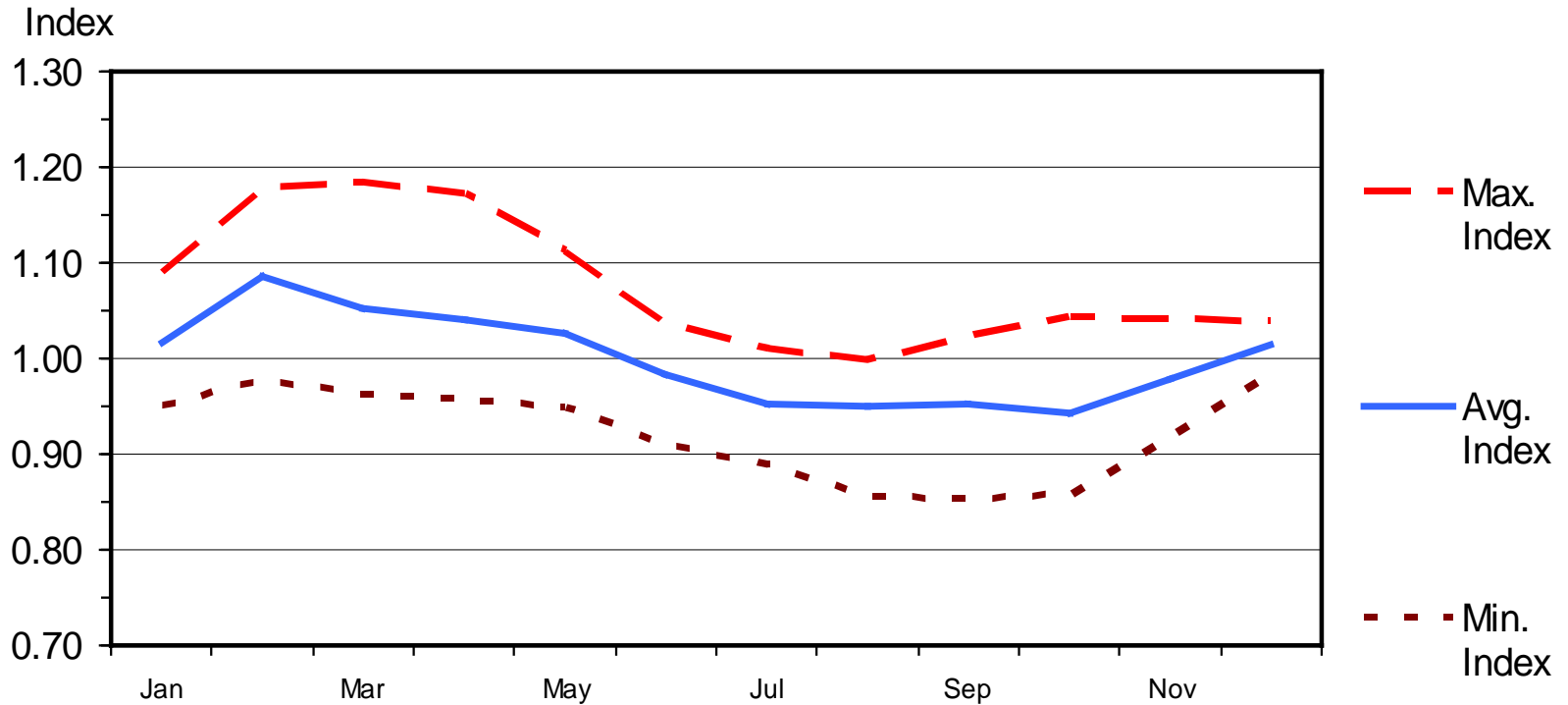
40-50 Pounds, Weekly

\$ Per Head



SEASONAL PRICE INDEX -- FEEDER LAMBS

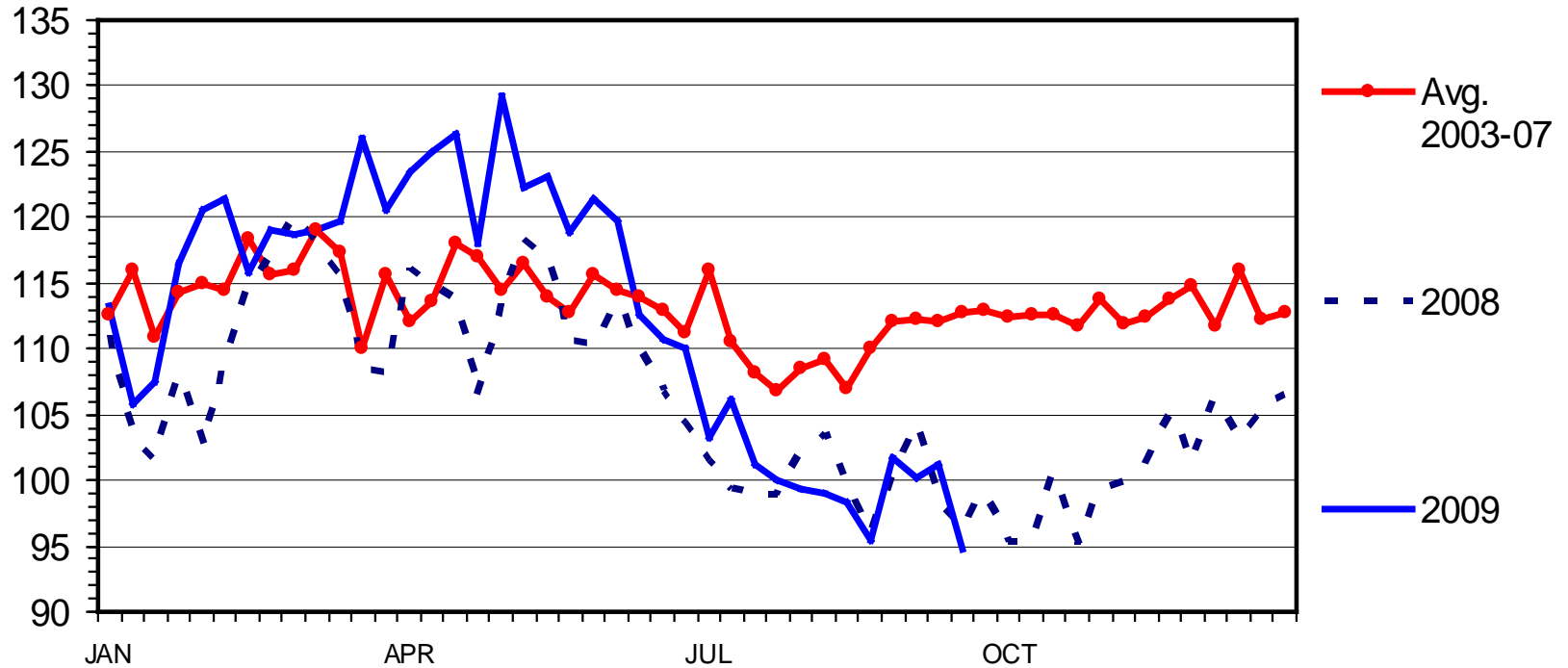
60-90 Pounds, 1999-2008



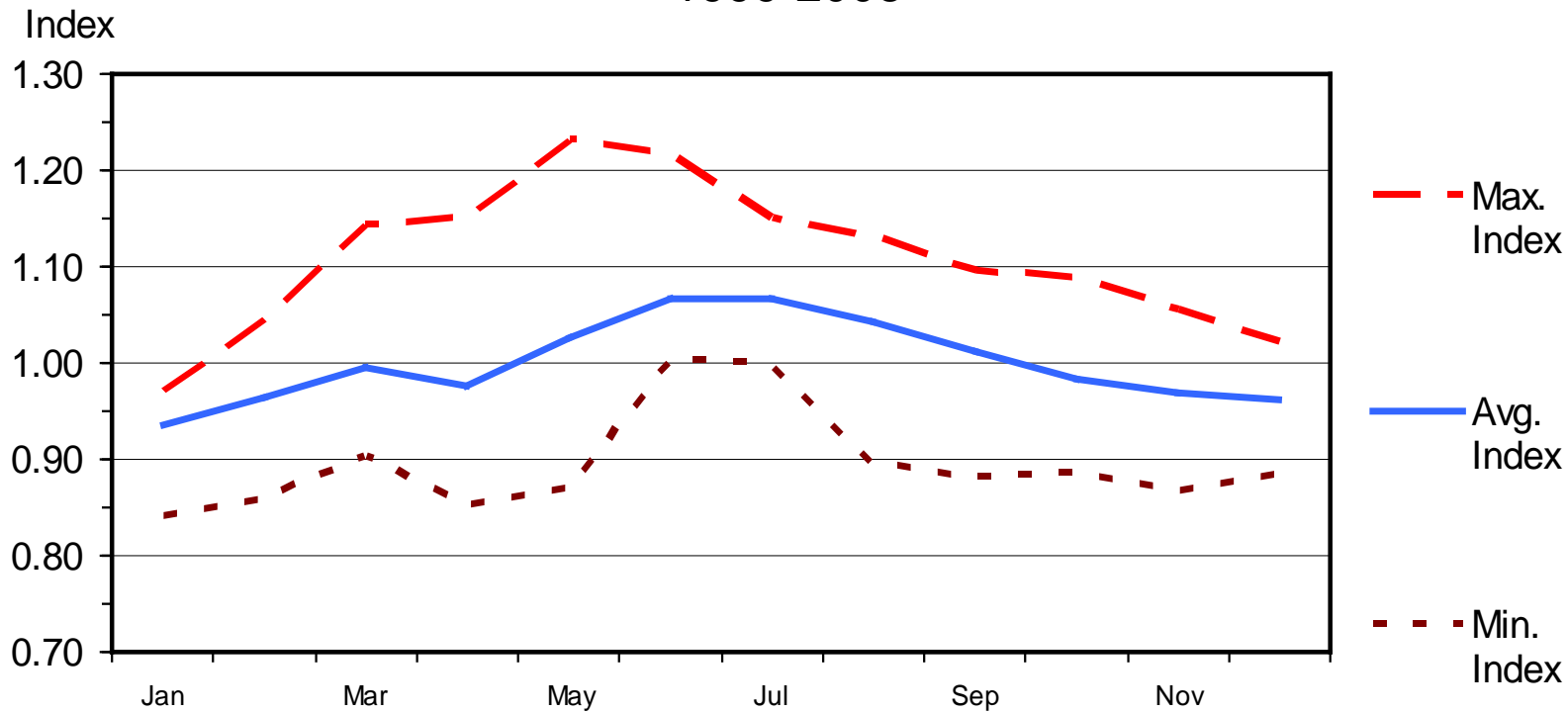
FEEDER LAMB PRICES

3-Market Average; Weekly

\$ Per Cwt.



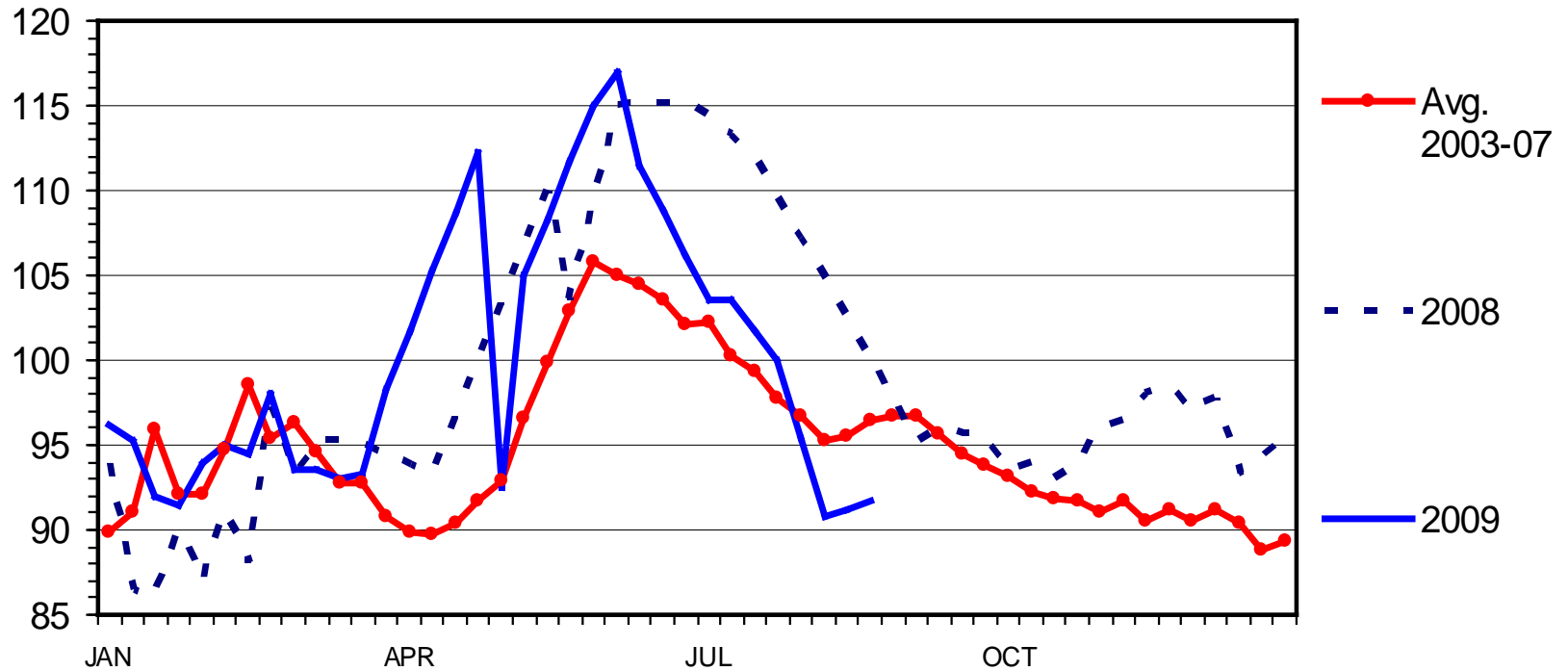
SEASONAL PRICE INDEX -- SLAUGHTER LAMBS 1999-2008



SLAUGHTER LAMB PRICES

Wooled, 110-130 lbs, Sioux Falls, Weekly

\$ Per Cwt.



Questions?

