

# Spot Blotch

*(Bipolaris sorokiniana)*

## SYMPTOMS

On leaves, dark brown round or elongated spots that may join into larger irregular patches. Both spots and patches surrounded by yellow. Severely affected leaves die and dry up, leaving the characteristic brown lesion visible. If severe, brown spots can occur on glumes.

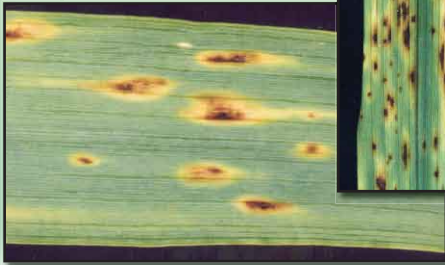


## HOSTS

Recently released 6-rowed barley varieties have good resistance; most 2-rowed varieties are moderately susceptible. Wheat and durum are affected to a lesser extent.

# CONTROL

- Plant resistant varieties
- Apply fungicides
- Avoid continuous barley; rotate with non-hosts, such as oats, rye, broadleaf species
- Destroy infected barley residue
- Use clean seed



**LEAF  
AND  
STEM**

# Spot Blotch