

Powdery Mildew

(Blumeria graminis f. sp. hordei)

SYMPTOMS

White to buff or gray powdery masses of spores scattered on or completely covering the leaf blade. All above-ground parts of the plant can be affected. Symptoms are associated with yellowing, browning and death of leaf tissue.

HOSTS

Barley, particularly when cool, humid and overcast.

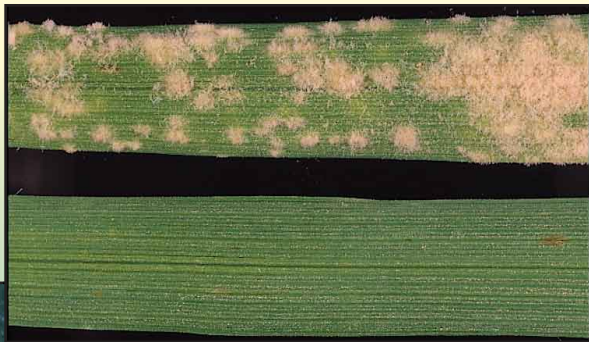


CONTROL

- Apply fungicides



*Close-up of
spore masses*



Powdery Mildew

**LEAF
AND
STEM**