

Leaf Rust

(Puccinia hordei)

SYMPTOMS

Small orange-brown circular spore masses surrounded by a bleached or yellow halo develop on upper leaf surface. If severe, sheathes can be affected and leaves can die.

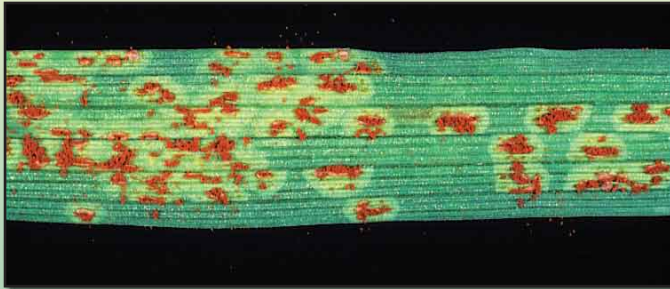
HOSTS

Barley, particularly late planted.



CONTROL

- Apply systemic fungicides



Leaf Rust

**LEAF
AND
STEM**