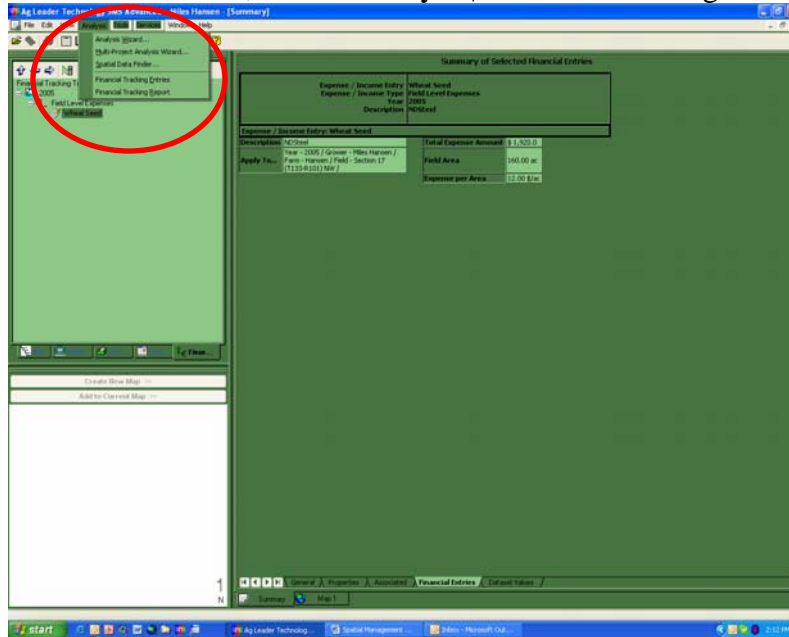
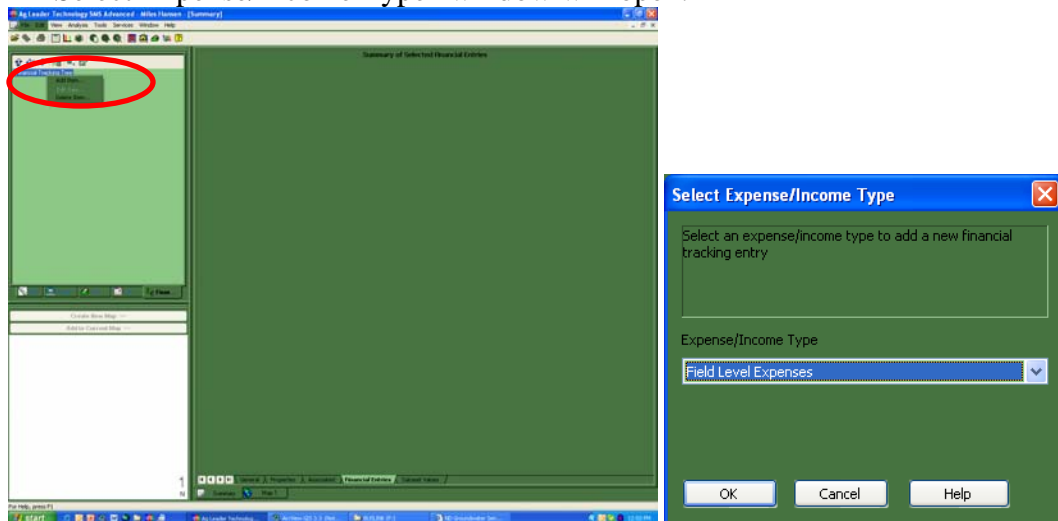


Spatial Management Systems 5x (SMS) Exercise 1 – Adding Financial Entries

1. In SMS Advanced, choose Analysis|Financial Tracking Entries



2. Right-click on the words “Financial Tracking Tree” in SMS. Choose “Add Item”. A “Select Expense/Income Type” window will open.



3. In the “Select Expense/Income Type” window select “Field Level Expense” and click “OK”. An “Income/Expense Info” window will open.

4. In the “Income/Expense Info” window type in the expense type and click “Next”.

Expense/Income Info

Enter a Name, Description, and Expense/Income Share percentages for the expense/income entry.

Expense/Income Entry Name: Wheat Seed

Description: NDSteel

Share expense/Income by percentage

Share Name	Share Percent
------------	---------------

Total Percent 0.0

Add Edit Delete

< Back Next > Cancel Help

5. In the “Expense/Income Entry” window select the Year, Grower, Farm and Field. In the “Value” section add the Total Expense Amount and the Field Area. Click “Calculate” Finally, click “Finish”.

Expense/Income Entry

Enter values for a specific expense/income entry that will be tracked based on selected management items and a time span, if available. Entries can be specific or apply to multiple selections, such as an expense that should be applied over multiple years.

Apply To:

Year: 2005

Grower: Miles Hansen

Farm: Hansen

Field: Section 17 (T133-R101) NW

Apply From:

Start Date: 6/22/2005

End Date: 6/22/2005

Enter Expense/Income Values

Name	Value	Units
Total Expense Amount	1920	\$
Field Area	160	ac
Expense per Area		\$/ac

Calculate

< Back Finish Cancel Help

John Nowatzki, Geospatial Specialist
Extension Ag & Biosystems Engineering Dept.
North Dakota State University, Fargo, ND 58102
Telephone: 701-231-8213 Email: John.Nowatzki@ndsu.edu