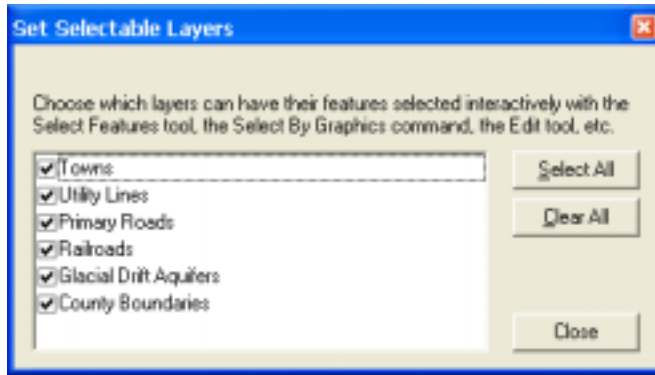
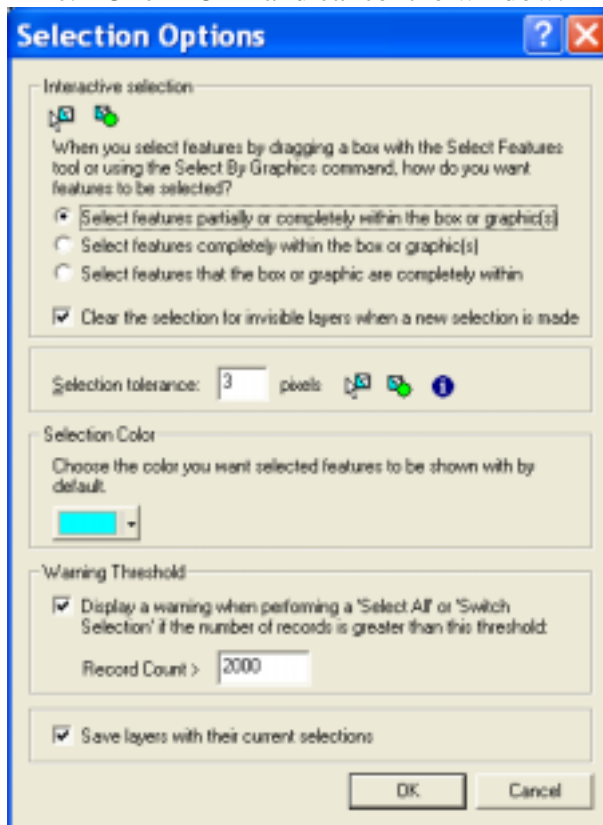


Selecting Data in ArcView 8.3 ArcMap – Exercise 23

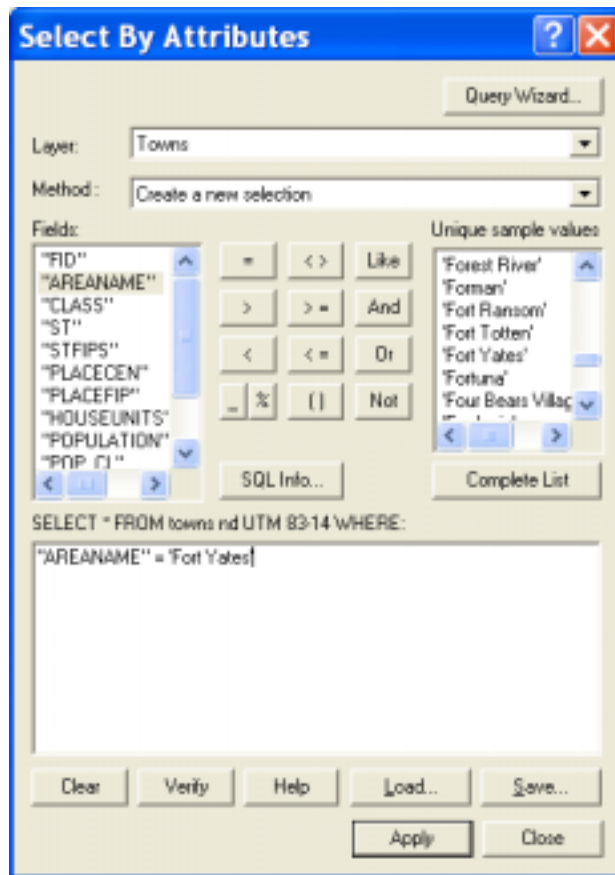
1. Set the “**Selectable Layers**”:
 - a. From the Selection pulldown menu choose “Set Selectable Layers”
 - b. Put checkmarks by the layer names you want to designate for selection.
 - c. Click “Close”.



2. Set the **selection options** as follows:
 - a. From the Selection pulldown menu choose “Options”
 - b. Set the “Interactive selection”, “Selection tolerance” and the Selection color”
 - c. Click “OK” and cancel the window.



3. To **select by attribute**:
 - a. From the Selection pulldown menu choose “Select by Attribute”.
 - b. Choose the layer to select.
 - c. Choose the method of selection.
 - d. Write a logical selection expression by double-clicking a field, a function and a unique sample value.
 - e. Click “Apply”
 - f. Close the Select by Attributes window.



4. The selection can be **saved as a new layers** as follow:
 - a. Right-click on the name of the selected layer in the table of contents.
 - b. From the “Selection” submenu choose “Create Layer From Selected Features”.

5. To **select by location**:
 - a. From the Selection pulldown menu choose “Select by Location”.
 - b. Choose the layer to select.
 - c. Choose the method of selection.
 - d. Choose the interacting layer.
 - e. Set the buffer distance.
 - f. Click “Apply”
 - g. Close the Select by Location window.

