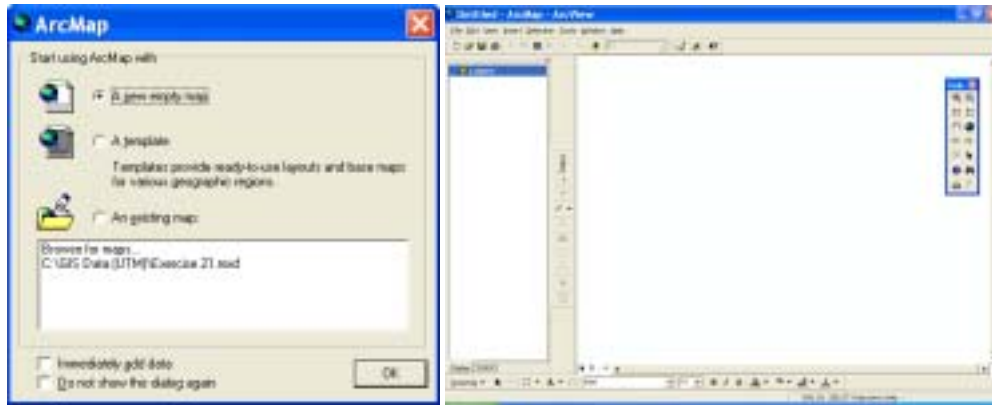


Calculating Acres in ArcView 8.3 ArcMap – Exercise 22

1. Start ArcMap. The “Start using ArcMap” window will display. Click “OK”.



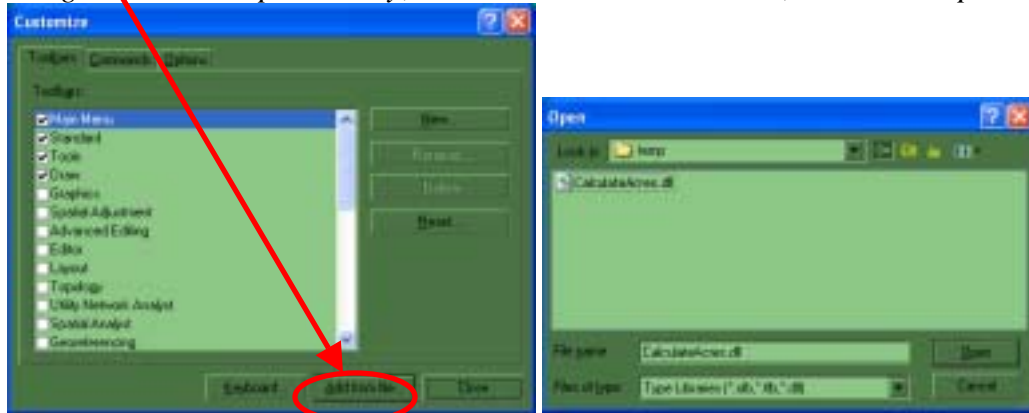
2. The Data View window will be displayed without layers.

Customizing a Toolbar to Add an “Acreage Calculator” Button.

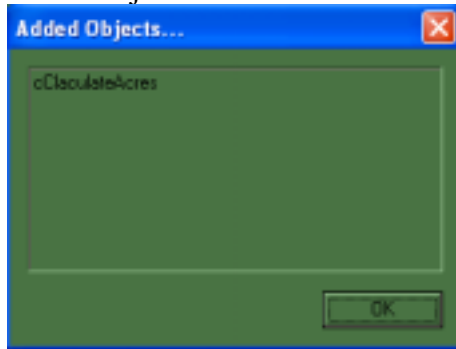
3. Add the “CalculateAcres.dll” to the C:\Temp folder of your computer hard drive. (The CalculateAcres.dll is available from the ESRI website.)
4. Bring up the Customize dialog by clicking the View->Toolbars->Customize menu item



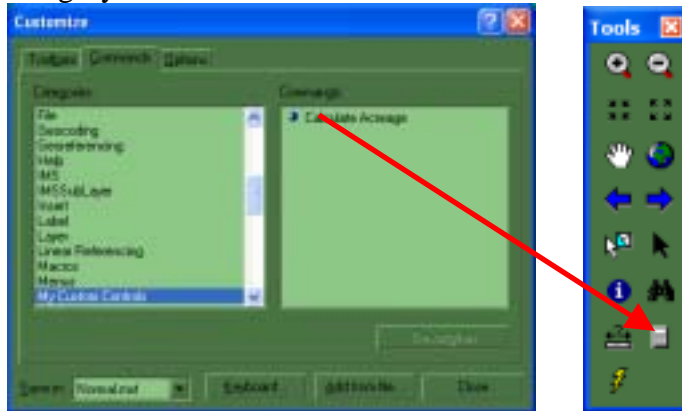
- In the “Customize” window, *browse for and select “CalculateAcres.dll”* using the “Add from file” button in the Customize window. In the “Open” window, *navigate to the Temp directory, choose “CalculateAcres.dll”,* and click “Open”.



- An “Added Objects” window will list the acreage .dll. *Click “OK”* to dismiss the Added Objects window.




- Go to the Commands panel of the Customize dialog and *select the Custom Tools* category. You should see the Calculate Acres button listed.



- You can now *drag it onto any visible toolbar.* (The icon will be small globe by default, however you can change the icon by right clicking on the icon in the Tools toolbar before closing the Customize window.)
- Close the Customize window.*
- The Acreage Calculator will appear in the Tools toolbar unless the customization is reset in the “Customize” window.

Calculating Acres of a Polygon Theme

11. Add polygon layers to the data frame as follows:

- Click the  “Add Data” button.
- Navigate to: C:\GIS Data\Kidder County\sections. Add the Sections layer for Kidder County.
- The Sections layer will automatically be displayed.
- Open the Attribute Table for the sections layer.



- The Attribute Table for Kidder County sections will not have a column for acres.

FID	Shape	AREA	PERIMETER	SECTION	SECTION_ID	SOURCE_ID	SECTION
0 Polygon		0.0000	0.00157	2	1	4000	6
1 Polygon		0.0000	0.0000	3	2	4000	5
2 Polygon		0.0000	0.00412	4	3	4000	4
3 Polygon		0.0000	0.0000	5	4	4000	3
4 Polygon		0.0000	0.00717	6	5	4000	2
5 Polygon		0.0000	0.00783	7	6	4000	1
6 Polygon		0.0000	0.00277	8	7	4000	6
7 Polygon		0.0000	0.00762	9	8	4000	5
8 Polygon		0.0000	0.0000	10	9	4000	4
9 Polygon		0.0000	0.0000	11	10	4000	3

- Then click the “Calculate Acres” button on the Tools toolbar. The attributes table will now include an “Acres” column.

FID	Shape	AREA	PERIMETER	SECTION	SECTION_ID	SOURCE_ID	SECTION	Acres
0 Polygon		0.0000	0.00157	2	1	4000	6	0
1 Polygon		2175217.73814	0.0000	3	2	4000	5	537.496303
2 Polygon		2148067.76815	0.00412	4	3	4000	4	530.293345
3 Polygon		2175685.75828	0.0000	5	4	4000	3	530.590471
4 Polygon		2137657.15042	0.00717	6	5	4000	2	543.050076
5 Polygon		2298818.79734	0.00783	7	6	4000	1	567.412878
6 Polygon		1939903.88862	0.00277	8	7	4000	6	482.715668
7 Polygon		2257158.38188	0.00762	9	8	4000	5	557.743823
8 Polygon		2344113.34880	0.0000	10	9	4000	4	579.230080
9 Polygon		2297652.43824	0.0000	11	10	4000	3	567.817548