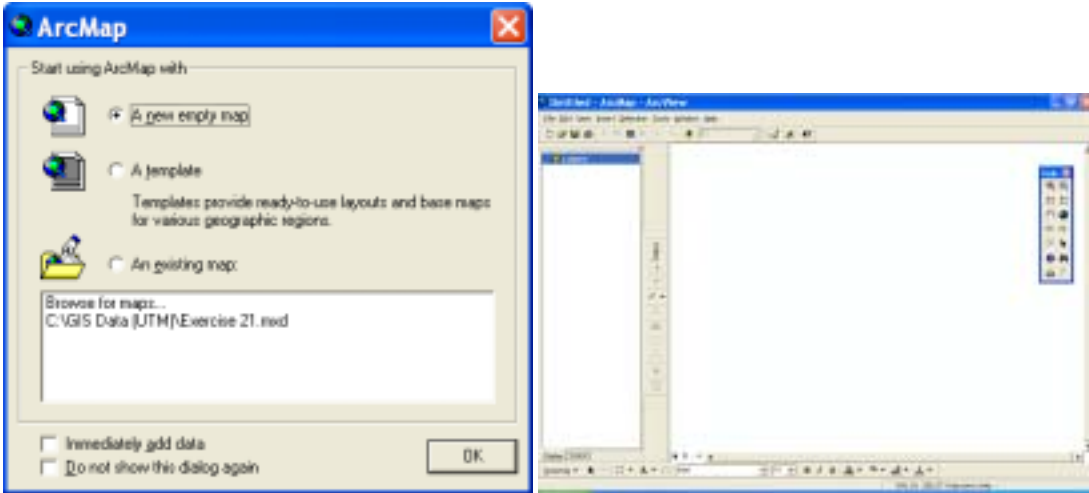
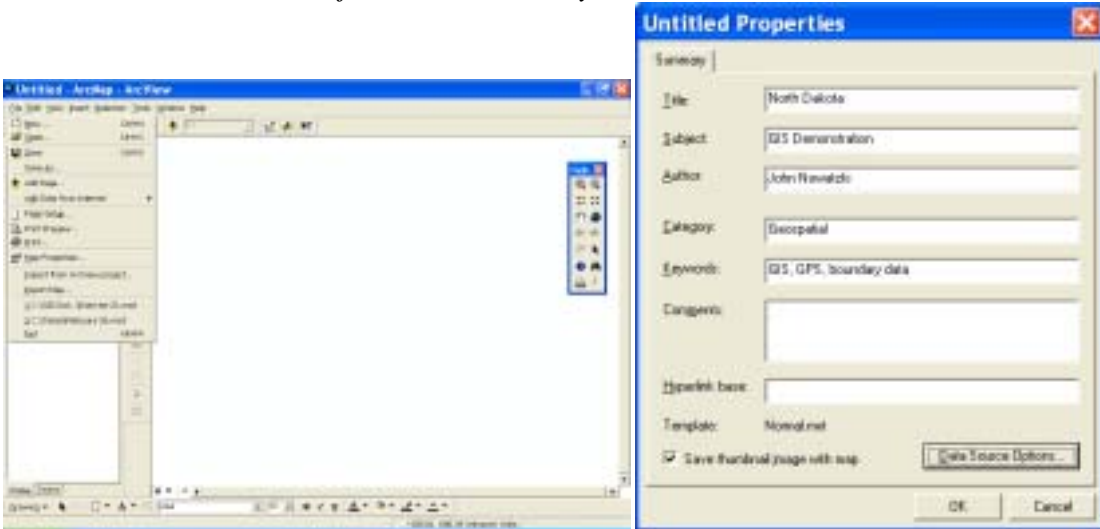


Introduction to GIS Using ArcView 8.3 ArcMap – Exercise 20

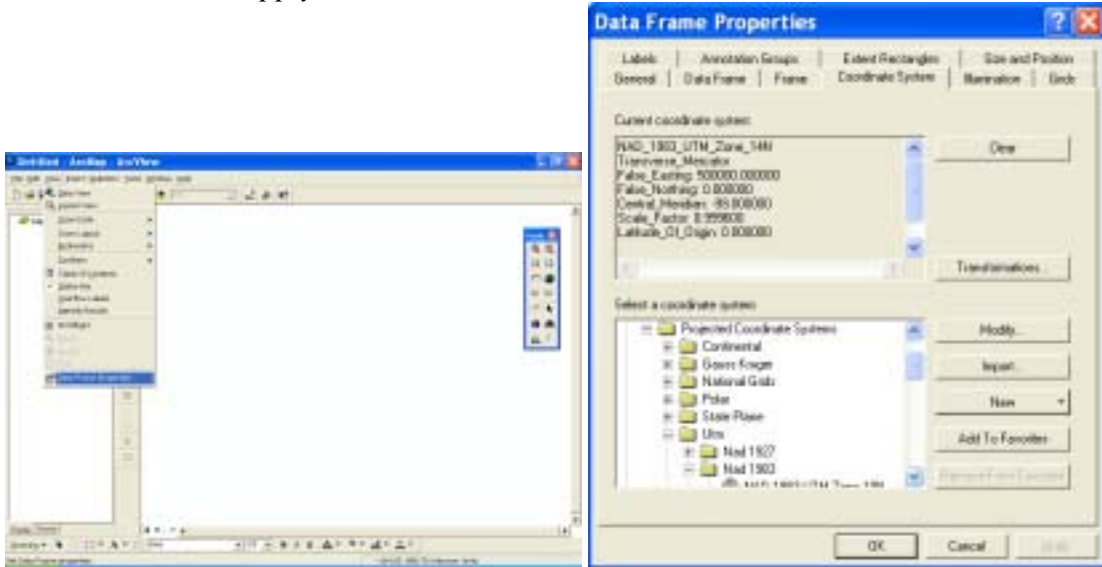
1. Start ArcMap. The “Start using ArcMap” window will display. Click “OK”.




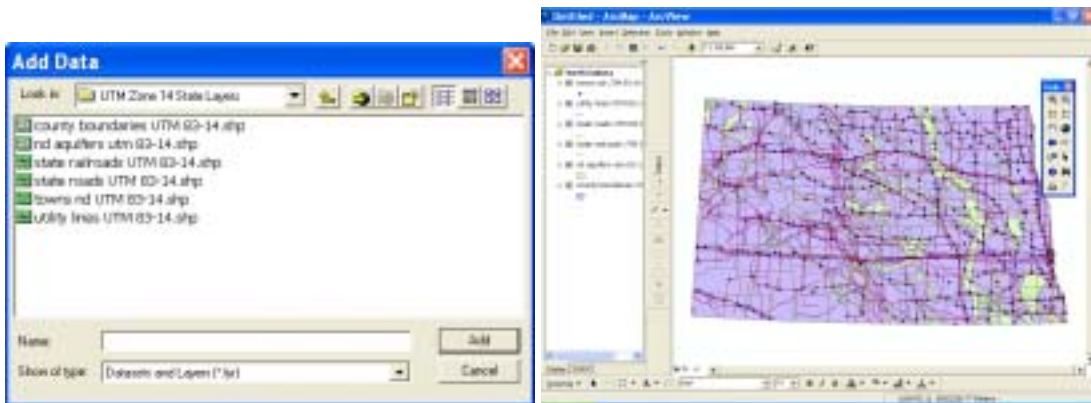
2. The Data View window will be displayed without layers.
3. Provide descriptive information to this GIS map as follows:
 - a. From the File pulldown menu choose “Map properties”.
 - b. Add a title, subject, author and key words.



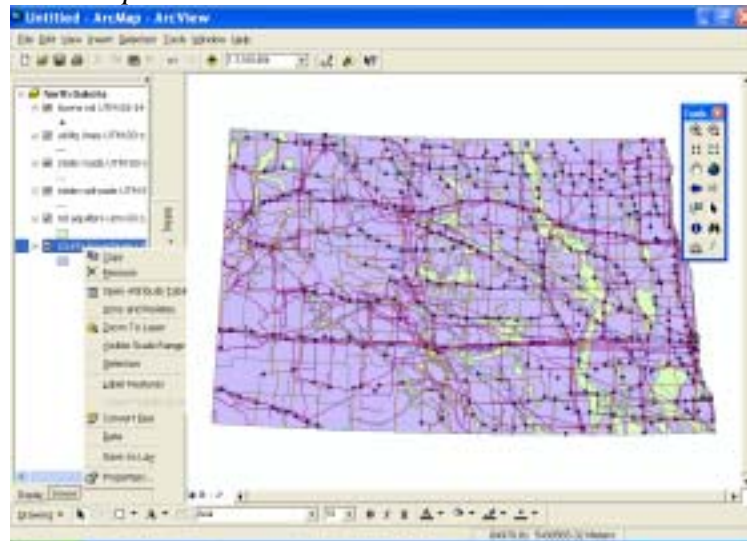
4. Set the Data Frame Properties as follows:
 - a. From the View pulldown menu choose “Data Frame Properties”
 - b. Choose the “Coordinate System” tab.
 - c. Navigate to the “Predefined, Projected Coordinate Systems UTM, Nad 1983” folder icon, and choose “NAD 1983 UTM Zone 14” map projection.
 - d. Click “Apply” and then “OK”.



5. Add GIS layers to the data frame as follows:
 - a. Click the  “Add Data” button.
 - b. Navigate to: C:\GIS Data(UTM)\UTM Zone 14 State Layers, and load all six layers: roads, railroads, towns, utility lines aquifers, and townships.
 - c. All the layers will automatically be displayed.
 - d. Remove the display checkmarks from all of the layers except “County Boundaries”.



6. Edit the display appearance of the County Boundaries layer as follows:
 - a. *Right click on the layer name in the table of contents and choose “Properties”*



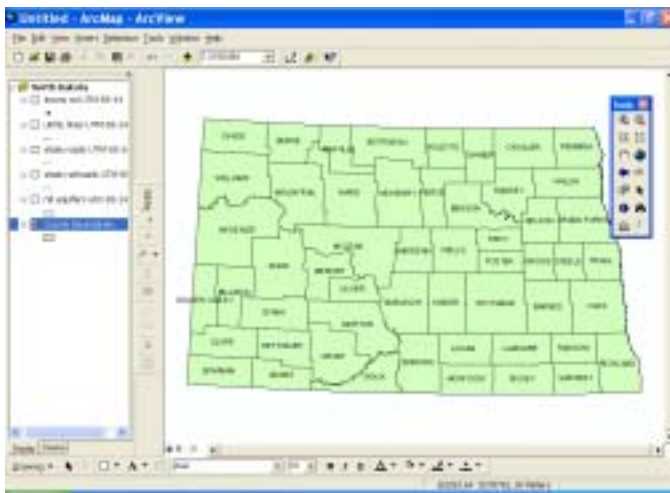
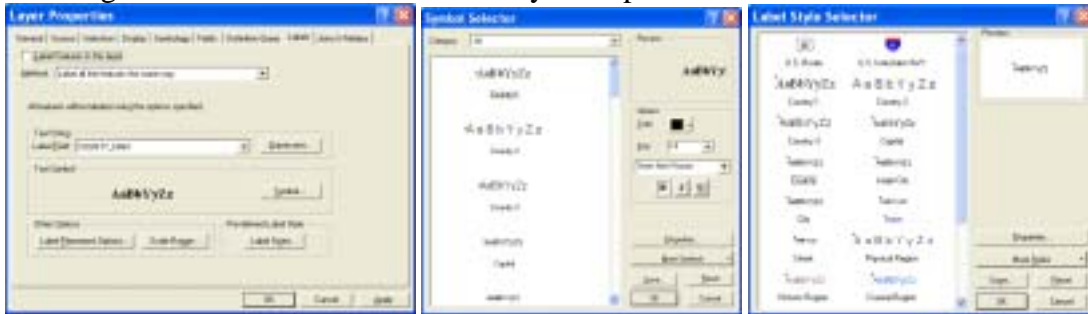
- b. *Choose the “General” tab.*
 - c. *Change the Layer Name to “County Boundaries”. Click “Apply”*



- d. *Click the “Symbology” tab.*
 - e. *Click the “Color Symbol” icon. A “Symbol Selector” window will be displayed.*
 - f. *Choose a light green color. Click “OK”. Click “Apply”.*



7. Label the county boundaries layer as follows:
 - a. Click the “Labels” tab in the Layer Properties window.
 - b. Put a checkmark in the radio box to the left of “Label Features in this layer”.
 - c. For Label Field choose “County_Nam”
 - d. Click the “Symbol” tab to display the “Label Style Selector”
 - e. Choose “County” and click “OK”
 - f. In the Layer Properties window click “Apply”
 - g. Click “OK” to dismiss the Layer Properties window.

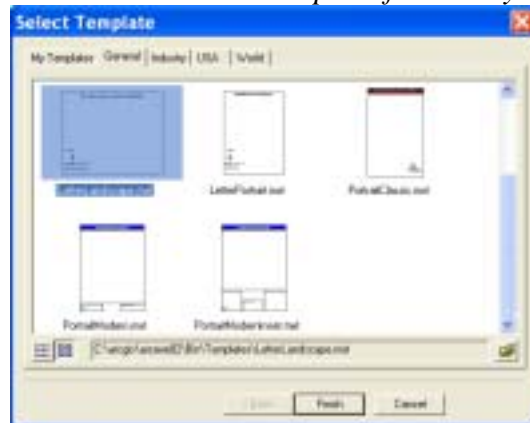


8. Save the map periodically to avoid losing changes made to the project.
 - a. Choose “Save As” from the File pulldown menu.
 - b. Choose a location and name for the map and click “OK”.
9. Edit the display properties of the other layers as desired.

10. Set the State Roads layer to be displayed only when zoomed in further than 1:500,000 as follows:
 - a. *Right click on the State Roads layer name in the table of contents to display the Layer Properties window.*
 - b. *Click on the “General” tab.*
 - c. *Click the radio button to the left of the words “Don’t show layer when zoomed:”*
 - d. *In the “out beyond 1:” box type: “500000”*
 - e. *Click “Apply”, and then “OK”*



11. Prepare a layout map as follows:
 - a. *From the View menu choose "Layout".*
 - b. *Select a desired template for the layout, and click "Finish".*



12. Edit the layout to add a name and other desired information.

