

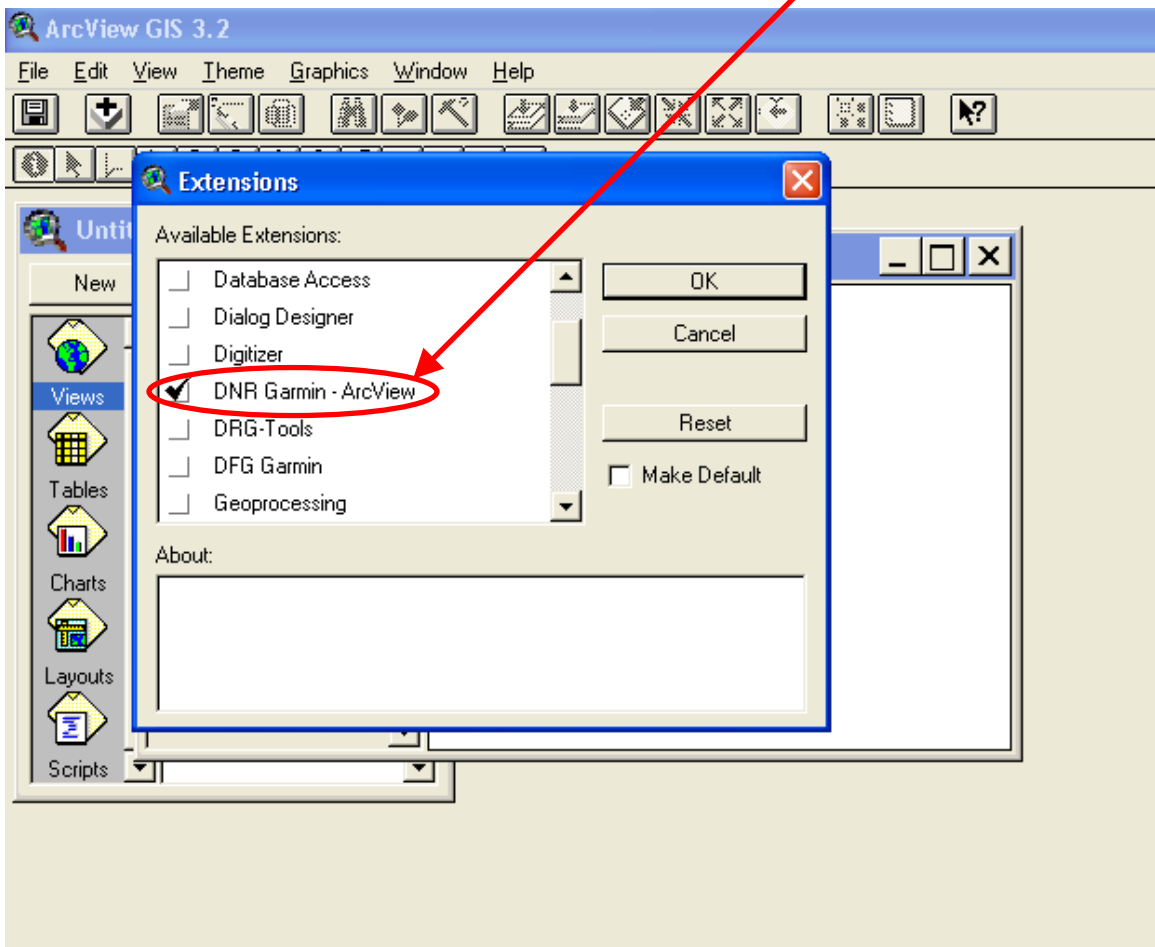
ArcView Application: Exercise 6 - Using the DNR Garmin - ArcView Extension

The DNR Garmin extension can perform several functions including:

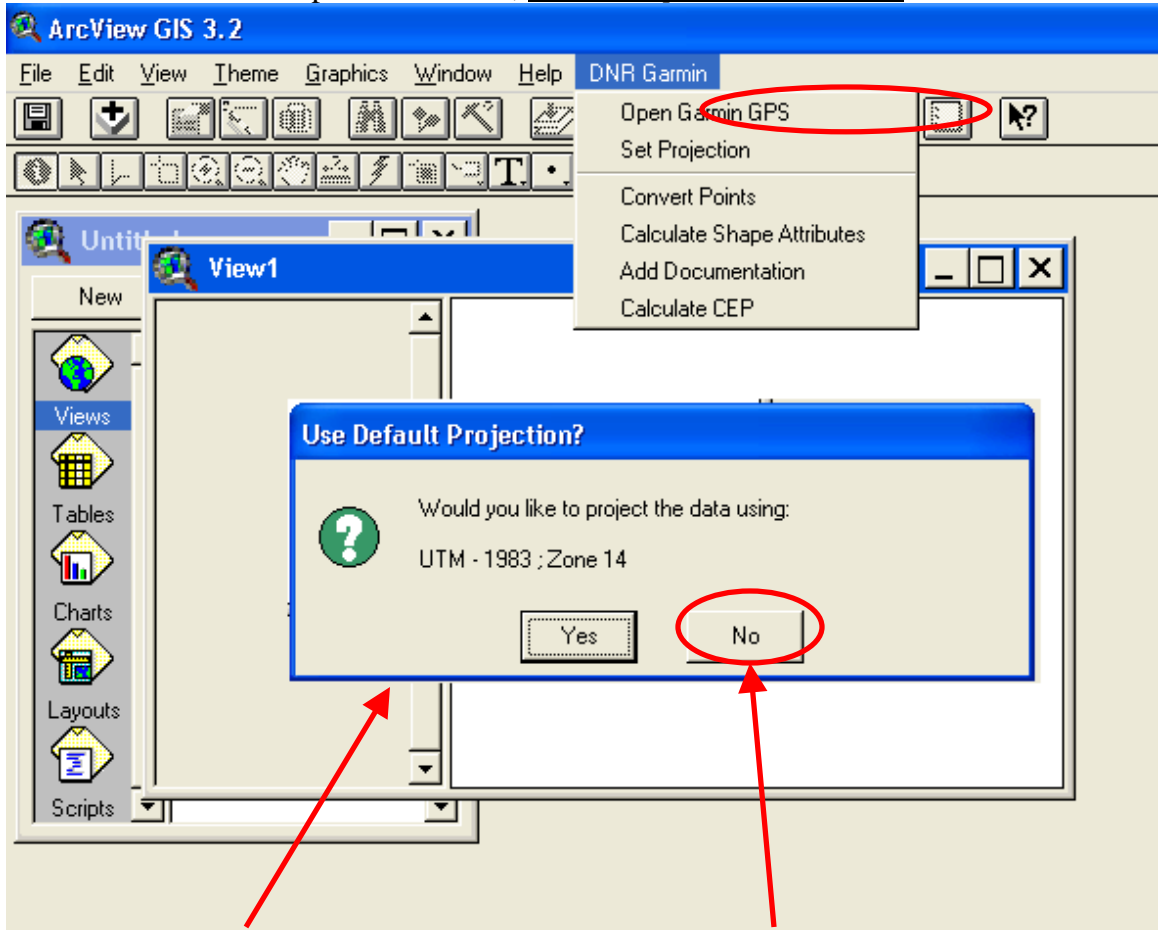
1. Downloading waypoints and tracks from Garmin GPS units to computers
2. Uploading ArcView shapefiles from computers to Garmin GPS units.
3. Editing Garmin waypoint and track files.
4. Real-time GPS tracking in computers

Instructions:

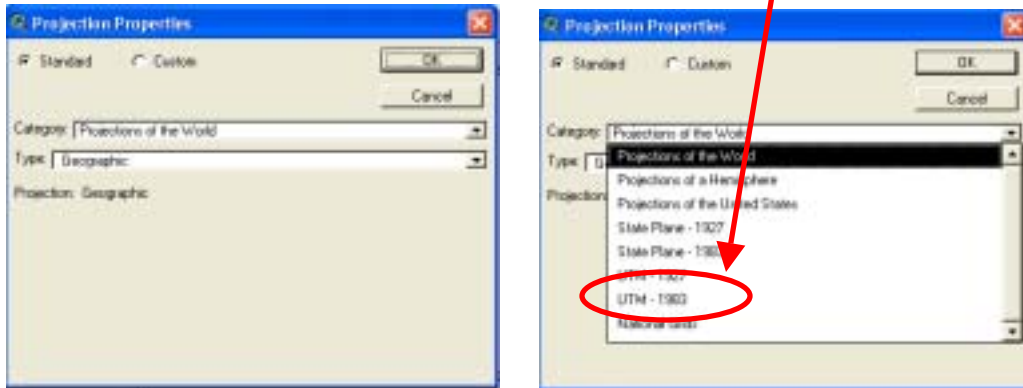
1. Start ArcView 3.2, and Open a New View without adding themes.
2. From the File pulldown menu, choose “Extensions” and put a checkmark in the DNR Garmin – ArcView extension.



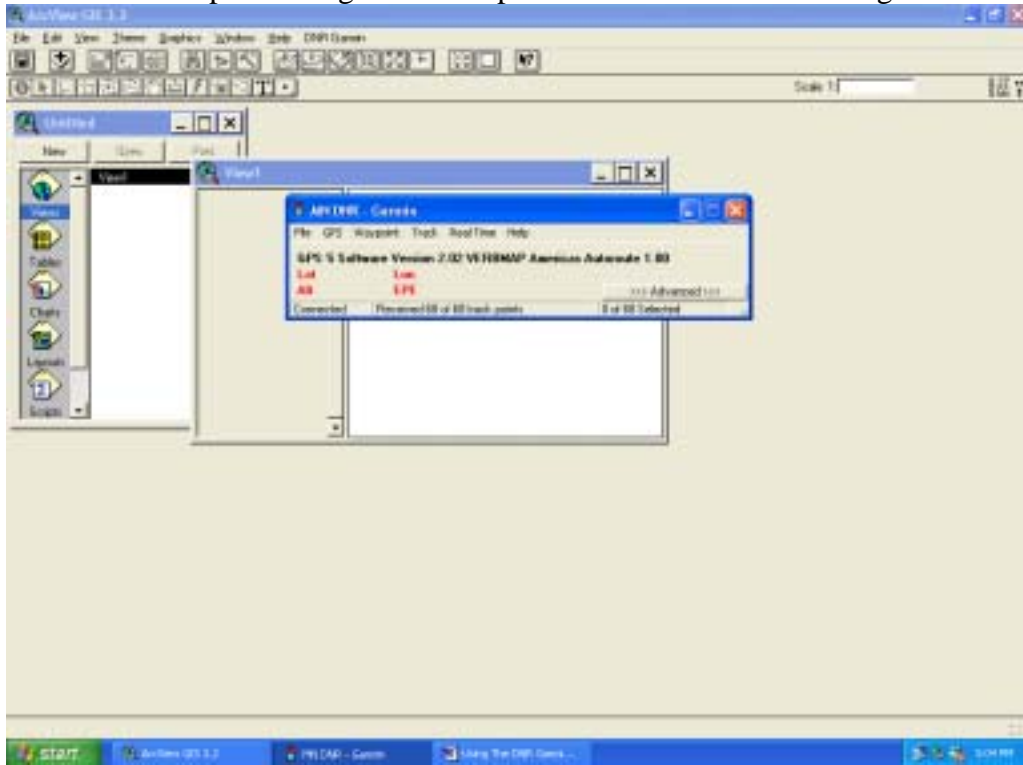
3. From the DNR Garmin pulldown menu, *choose “Open Garmin GPS”*.



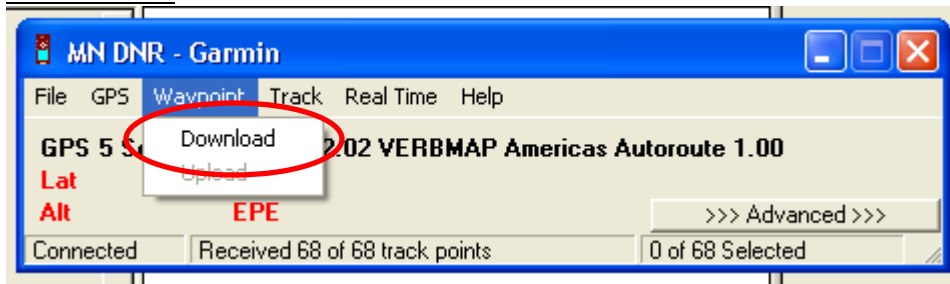
A “Use Default Projection?” window will open. Choose “No”. A “Projection Properties” window will open. Choose Category: UTM –1983, and Zone 14. Click “OK”.



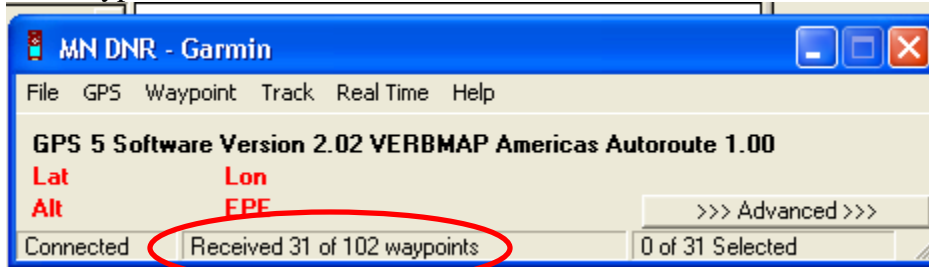
4. The MN DNR – Garmin window will open. The GPS software will be displayed in the window.
5. (Note) If a connection is not automatically established between the computer and the GPS unit:
 - a) The Garmin GPS “Interface” must be set to “Garmin” (Available in the GPS Main Menu, Setup.)
 - b) The GPS Port in the MN DNR – Garmin window must have the Port set the same as the port setting in the computer Hardware Device Manager



6. From the “Waypoint” pulldown menu in the MN DNR – Garmin window, choose “Download”.



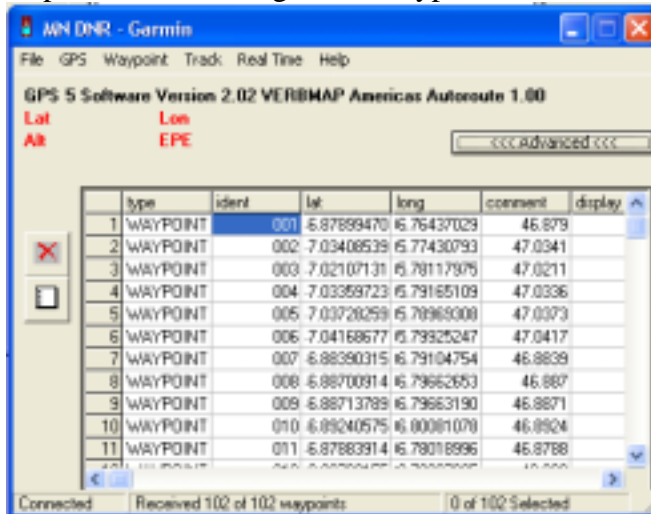
7. The waypoints will download from the GPS unit.



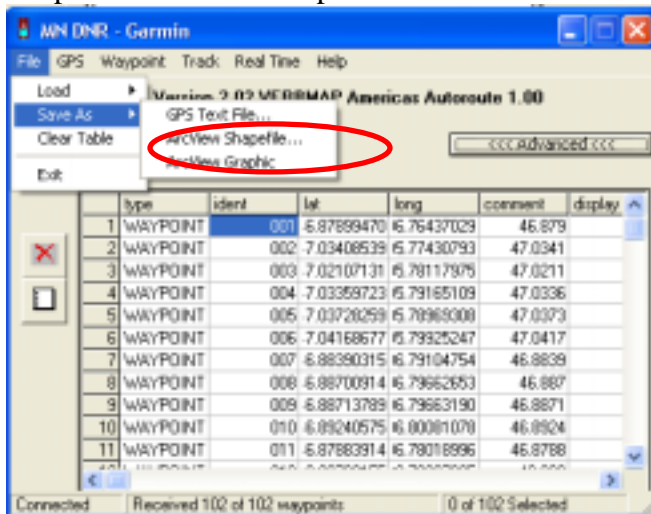
- When the Waypoints are downloaded a DNR Garmin window will display showing how many points were loaded from the GPS unit. Click “OK”.



- Clicking the “Advanced” button in the DNR Garmin window will allow inspection and editing of the waypoints.



- Save the waypoints as an ArcView shapefile by choosing “Save as ArcView Shapefile” from the file pulldown menu.



- Name the new shapefile, and navigate to a desired location to save the file in the computer. Click “OK”. The shapefile will be displayed in the View window.
- Note: GPS tracks can be downloaded and saved as shapefiles similarly. However, the DNR Garmin program will prompt you to decide whether you want to save the track as a point, line or polygon shapefile.