

ArcView 3.2 GIS Exercise 5a – Subsetting Images

(Note: The ArcView Image Analysis extension is required for this exercise.)

Image formats for ArcView

1. ArcView accepts a variety of image formats including bmp, jpeg, tiff, imagine, and MrSID.
2. Images may be scanned, aerial photography, satellite imagery, etc.

Initial Steps to create a project:


1. Start ArcView. A “Welcome to ArcView GIS” window will open. Check “OK”.
2. In the Add Data window, click “Yes” to the question “Would you like to add data to the view now?” An “Add Theme” window will open.

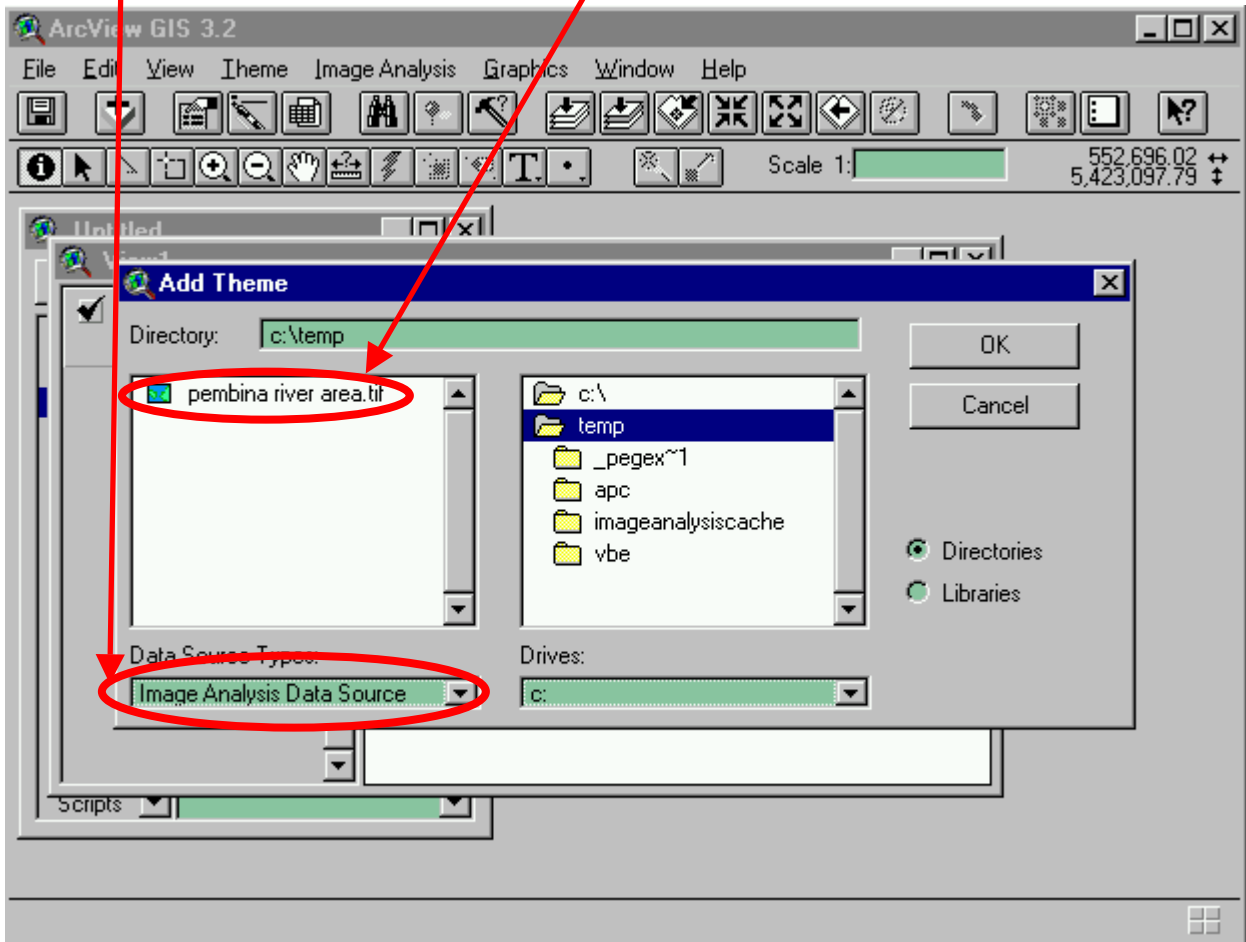


3. Load the drains and sections themes for the Pembina River Area.
4. Display the themes in a view by checking the box in the view legend beside the theme name.

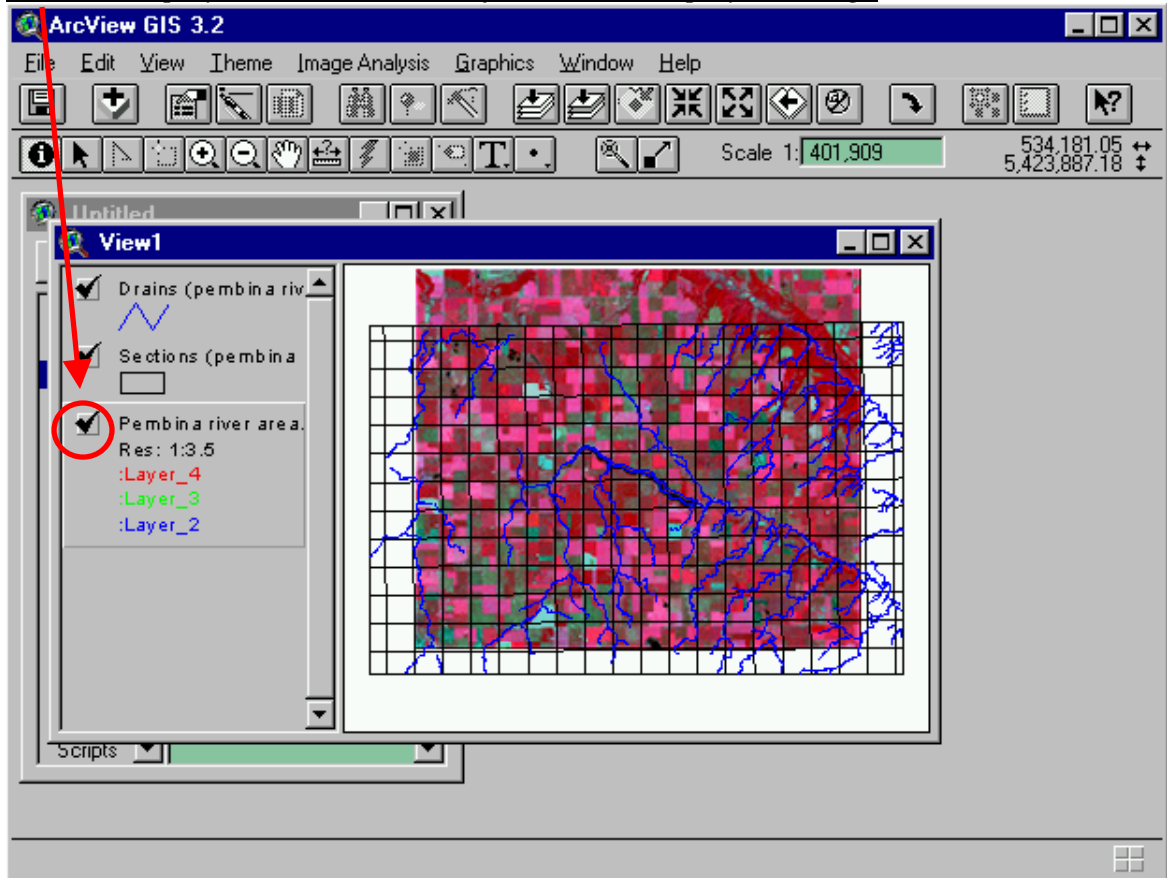
Adding Images:

Load the Image Analysis extension. Extensions are found in the File pulldown menu.

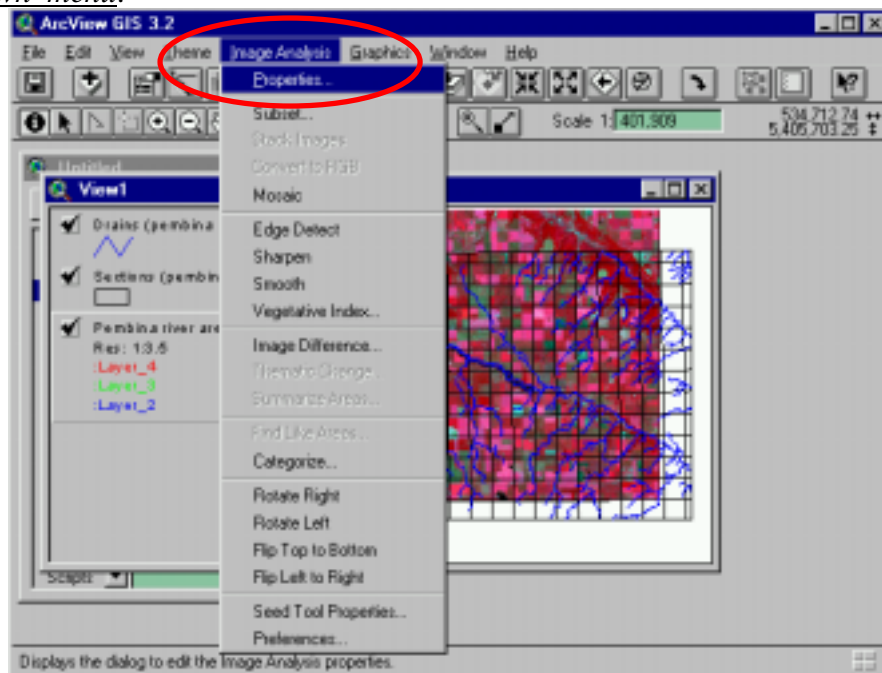
5. Click the Add Theme button  to add an image to the view. Choose “Image Analysis Data Source”.




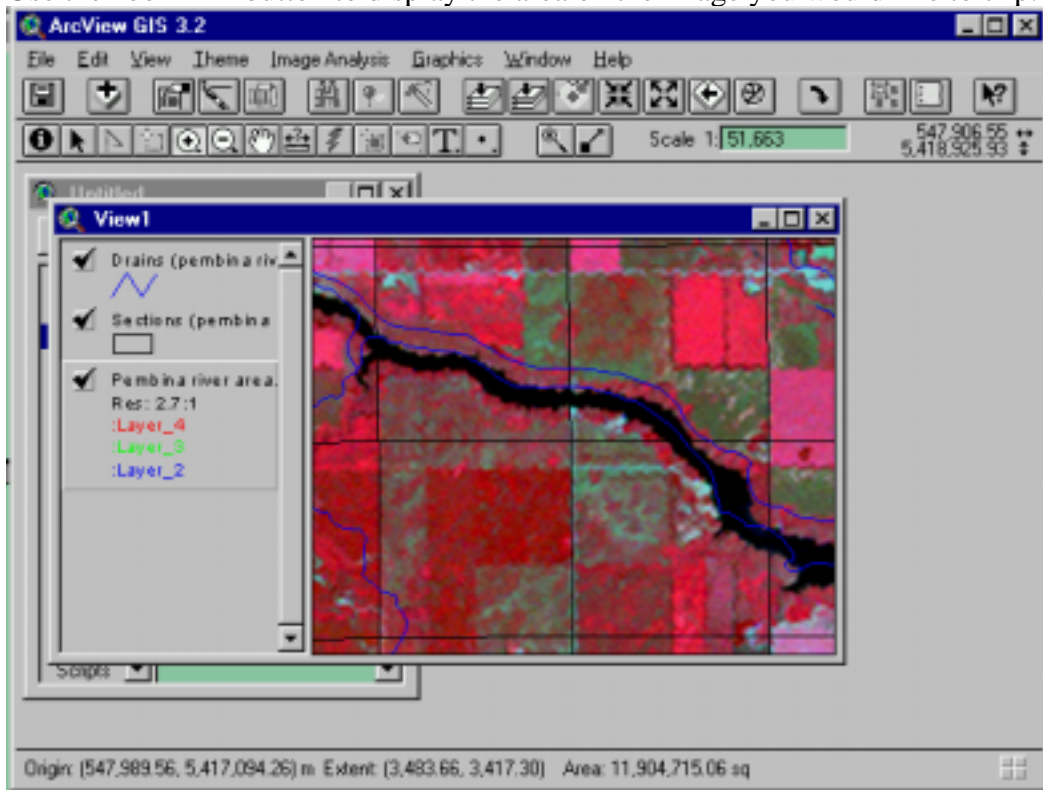
6. *Click the display button in the table of contents to display the image.*



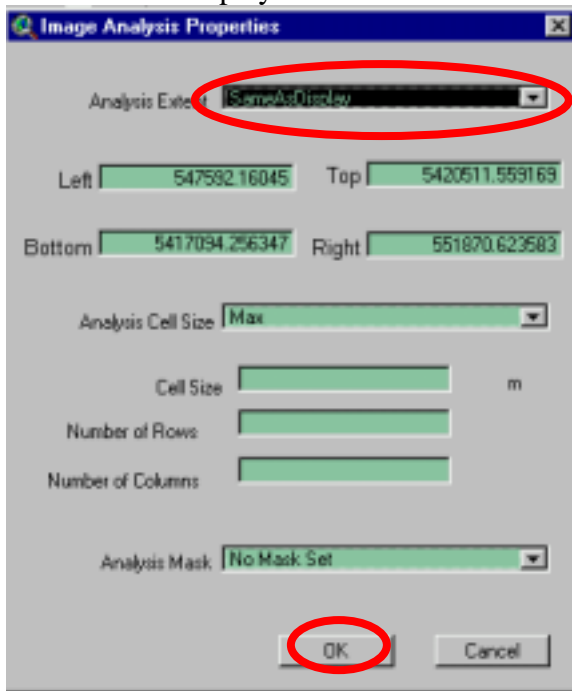
7. *Make the Image theme active, and Choose “Properties” from the Image Analysis pulldown menu.*



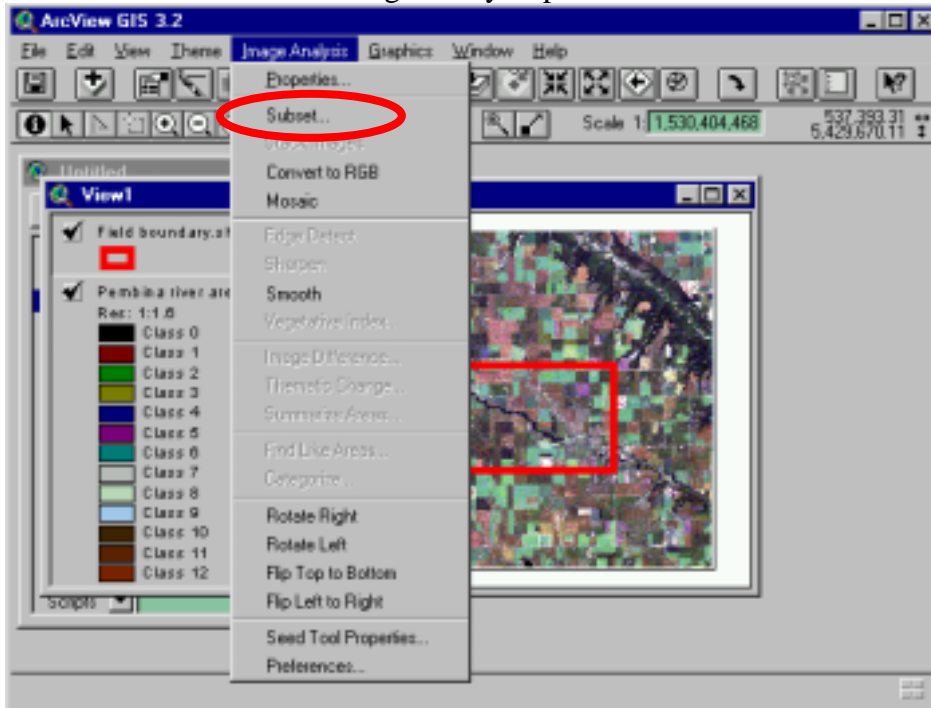
8. Use the zoom  button to display the area on the image you would like to clip.



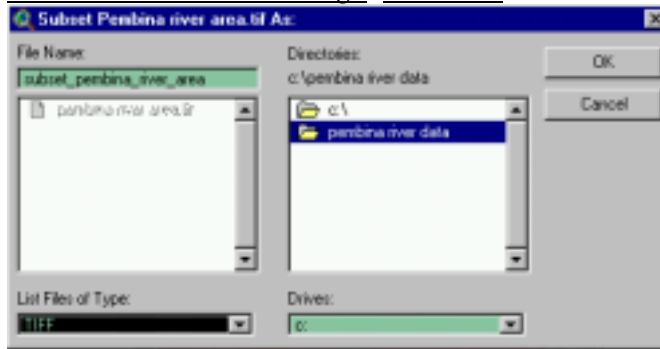
9. In the Image Analysis Properties window, set the Analysis Extent to the “SameAsDisplay”. Click OK.



10. Accept the default to the statement “Select desired bands”, and click “OK” (This will only be asked when clipping certain multi-spectral images.)
11. Choose “subset” from the Image Analysis pulldown menu.



12. In the Subset window, name the new image, choose TIFF image type, and choose a location to save the image. Click OK.



13. The new image can be added to the view.

