

ArcView 3.2 GIS Exercise 2 – Displaying GPS Data in ArcView (Data Collected using ArcPad GIS in IPAQ Computer)

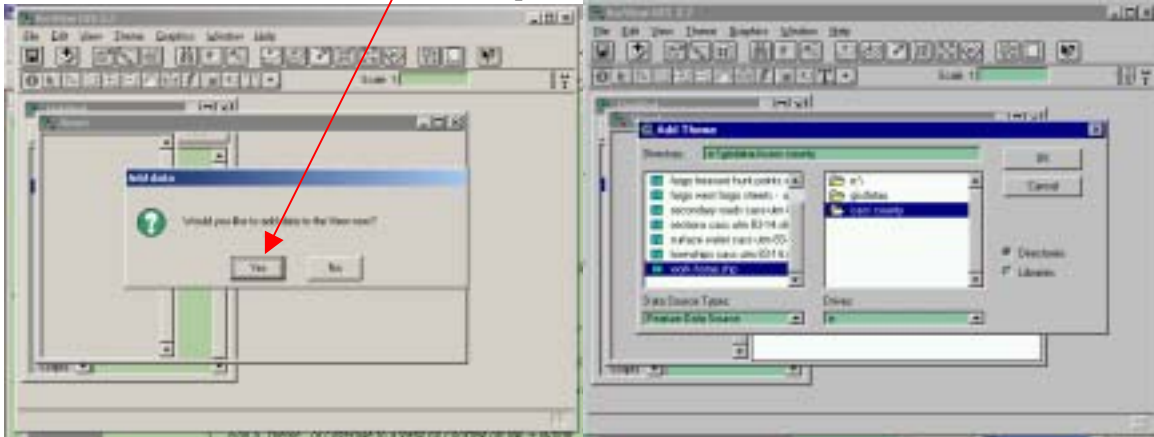
Transferring GPS Shapefiles (From An IPAQ to a Desktop or Laptop Computer)

The procedure for transferring GPS data from an IPAQ to a PC is the same regardless of which GPS unit was used to collect the data assuming it was collected in ArcPad. The ArcPad GIS program collects GPS data in shapefile format. Shapefiles have four computer files with the same name (the four files have different endings: .dbf, .prj, .shx, and .shp) that are stored in the same directory in computer memory. All four of files associated with a shapefile must be moved together and stored in the same directory to be usable in a GIS computer program.

1. Connect the IPAQ and PC as a partnership or guest connection using ActiveSync.
2. Use Windows Explorer to move the GPS data from the IPAQ to the desktop or laptop computer:
 - a. Navigate to “Mobile Device” in Windows Explorer.
 - b. Select the GPS data files in the memory of the IPAQ by holding the “Control” key down on the PC while selecting the desired files with the left mouse key.
 - c. From the “Edit” pulldown menu in Windows Explorer, select “Copy”.
 - d. Navigate to desired directory on the PC in Windows Explorer. (For this exercise put the data in the C:\Temp directory.)
 - e. From the “Edit” pulldown menu in Windows Explorer, select “Paste”.
 - f. Answer “OK” to the question “Active Sync may alter the files”
3. The data is now available in the desktop or laptop computer for use in ArcView.
4. Follow the steps outlined on the next pages to add the GPS data to ArcView.

Steps to create a project:

1. Start ArcView. A “Welcome to ArcView GIS” window will open. Check “OK”.
2. In the Add Data window, click “Yes” to the question “Would you like to add data to the view now?” An “Add Theme” window will open.



3. In the “Add Theme” window navigate to the “c-drive” on the right, click on the “Temp” directory, then click on the “desired GPS data” file in the left window. Click “OK”.
4. Display the GPS theme in a view by checking the box in the view legend beside the theme name.

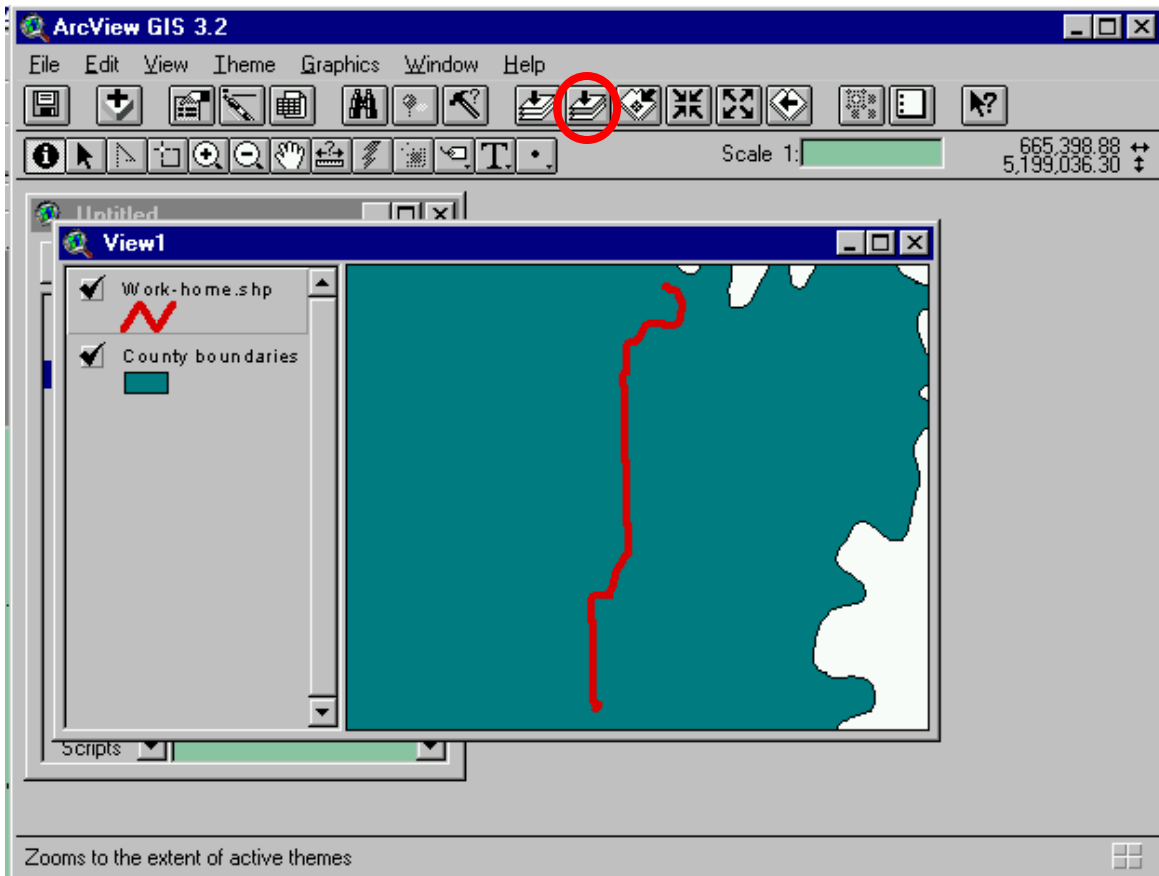


Adding Additional Themes:

5. Additional themes can be added by clicking on the  button on the button bar. An Add Themes window will open.

Focusing the View on the GPS data:

6. Zoom in to view the GPS data in the View window. Click the “Zoom to active themes” button to focus the view on the GPS data.



Saving a project:

7. Use the File pulldown menu to select “Save Project As”.
8. In the “Save Project As” window save the project with the name “North Dakota Project” on the c-drive and in the “Temp” directory.