

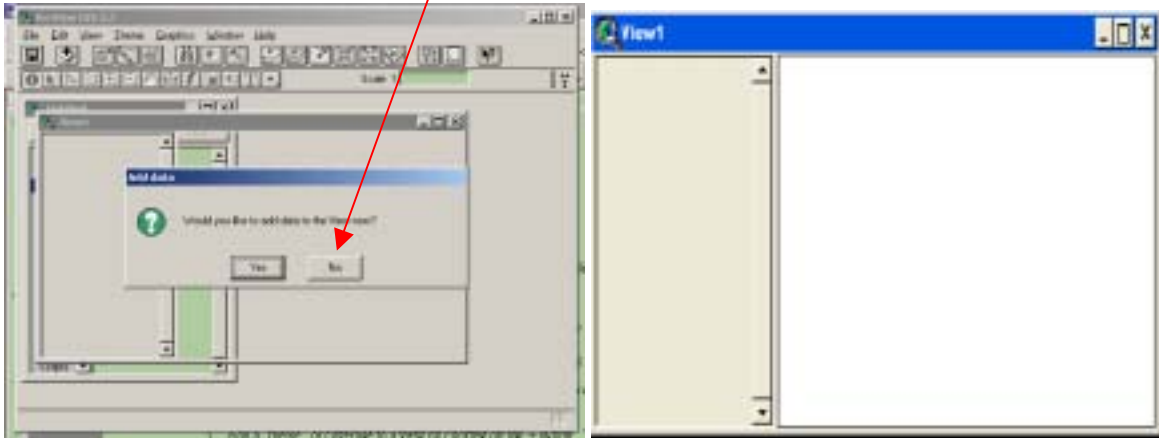
ArcView 3.2 GIS Exercise 10 – Creating Event Themes in ArcView (Using Tabular GPS Data)

Preparing yield data for ArcView

1. ArcView accepts yield data in tabular format in either .dbf or .txt formats.
2. Yield data may be in a space or comma delimited format and require manipulation to transform it into the required tabular format.
3. A spreadsheet computer program can be used to format the data appropriately.
4. Column names should be added in the spreadsheet.
5. Be sure to check that the latitude and longitude columns have at least 6 decimal places.

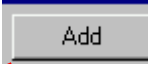
Initial Steps to create a project:

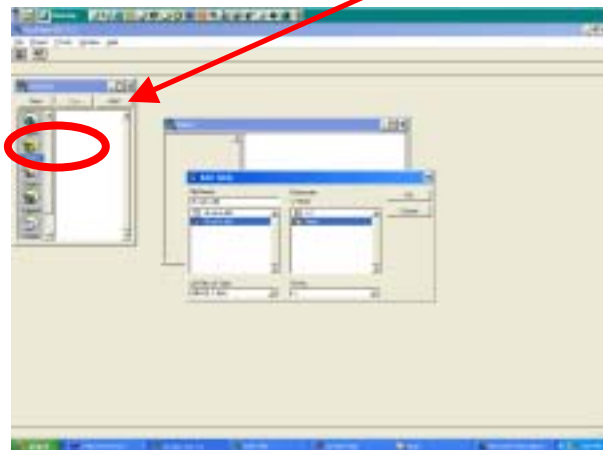
1. Start ArcView. A “Welcome to ArcView GIS” window will open. Check “OK”.
2. In the Add Data window, click “No” to the question “Would you like to add data to the view now?”



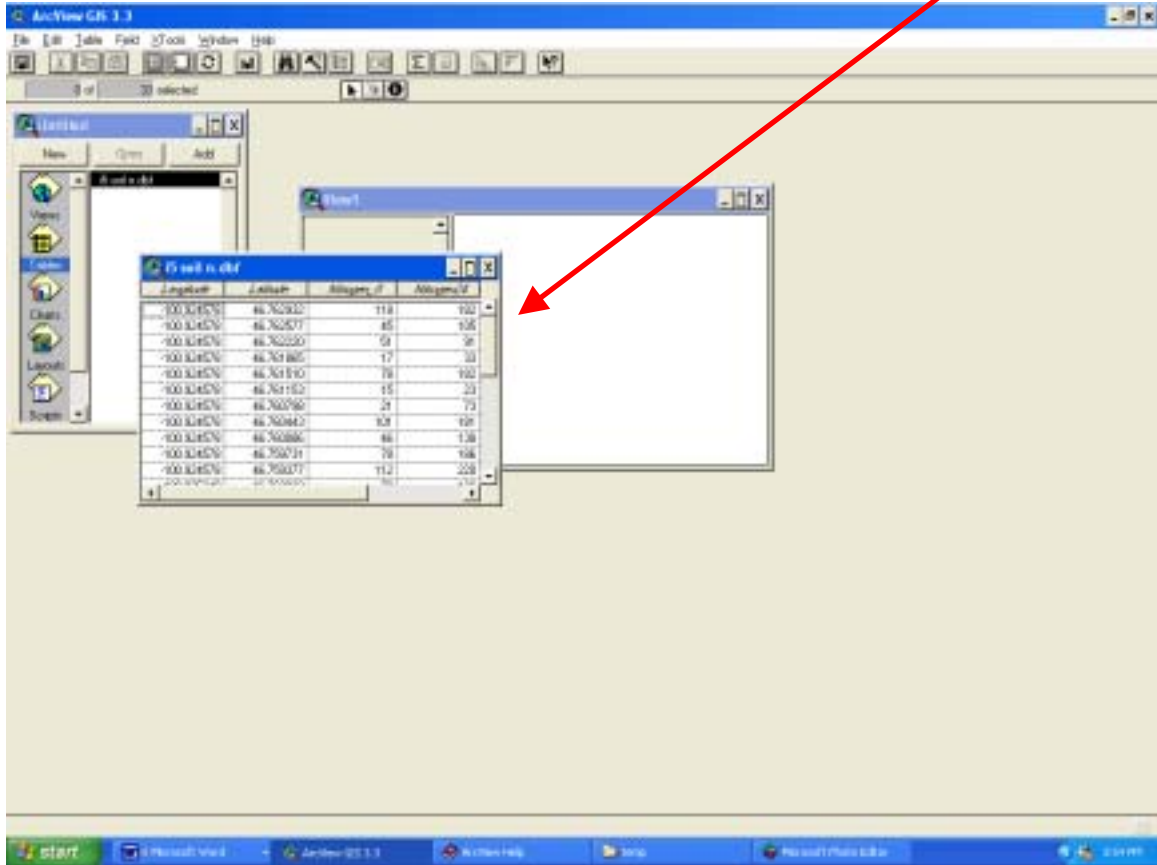
Adding X,Y Data Tables:

In order to add tables to ArcView it is necessary to resize the ArcView windows to be able to see the project (Untitled) window and view windows simultaneously.

3. Tables can be added by clicking on the  button in the project window. An Add Table window will open.



4. Select a data table to add to the ArcView project. The table will be added to ArcView.



Adding an Event Theme

Latitude/longitude data is added to a view window as an event theme. Even though event themes are displayed in the view window they are not stored on the computer's memory as shapefiles. Event themes need to be converted to shapefiles to be saved for later use.

5. From the View pulldown menu *choose "Add Event Theme"*.

